



**Water Monitoring Result at C7 - Windsor House
Mid-Flood Tide**

Date	Time	Weather Condition	Sampling Depth		Water Temperature		pH			Salinity		DO Saturation		DO		Turbidity		Suspended Solids						
			m		°C		-		ppt		%		mg/L		NTU		mg/L							
					Value	Average	Value	Average	Value	Average	Value	Average	Value	Average	Value	Average	Value	Average						
30/4/2015	16:54	Fine	Middle	-	26.40	26.40	26.40	8.20	8.20	8.20	31.54	31.54	31.56	89.1	88.1	88.5	5.98	5.94	5.95	2.05	2.01	2.01	<2	<2
	16:56		Middle	-	26.40	26.40		8.20	8.20		31.58	31.58		87.6	89.3		5.88	5.99		2.00	1.97		<2	
2/5/2015	15:45	Sunny	Middle	-	26.20	26.20	26.30	8.10	8.10	8.11	31.42	31.42	31.63	81.3	80.8	80.8	5.48	5.43	5.43	1.37	1.41	1.43	7	6.50
	15:47		Middle	-	26.40	26.40		8.12	8.12		31.83	31.83		80.7	80.2		5.42	5.40		1.46	1.49		6	
4/5/2015	20:00	Cloudy	Middle	-	26.50	26.50	26.50	8.18	8.18	8.18	29.91	29.91	29.92	85.4	86.9	86.5	5.81	5.91	5.89	1.77	1.60	1.67	<2	<2
	20:01		Middle	-	26.50	26.50		8.18	8.18		29.92	29.92		86.3	87.3		5.88	5.94		1.63	1.66		<2	
6/5/2015	19:21	Cloudy	Middle	-	26.50	26.50	26.50	8.10	8.10	8.10	30.55	30.55	30.55	89.4	89.8	89.9	6.05	6.07	6.08	2.01	1.48	1.73	<2	<2
	19:22		Middle	-	26.50	26.50		8.09	8.09		30.55	30.55		90.2	90.3		6.10	6.10		1.96	1.46		<2	
8/5/2015	21:15	Cloudy	Middle	-	27.00	27.00	27.05	8.09	8.09	8.08	29.47	29.47	29.47	83.8	84.7	84.4	5.65	5.71	5.69	1.73	1.71	1.69	<2	<2
	21:16		Middle	-	27.10	27.10		8.06	8.06		29.47	29.47		84.4	84.5		5.69	5.69		1.69	1.64		<2	
11/5/2015	10:45	Fine	Middle	-	26.30	26.30	26.35	8.10	8.10	8.10	30.21	30.21	30.21	60.7	61.6	61.5	4.13	4.19	4.18	2.13	2.05	2.05	4	3.50
	10:47		Middle	-	26.40	26.40		8.09	8.09		30.20	30.20		62.2	61.5		4.23	4.18		2.01	2.01		3	
13/5/2015	15:58	Fine	Middle	-	25.80	25.80	25.85	8.14	8.14	8.14	30.75	30.75	30.76	61.0	61.6	60.6	4.17	4.24	4.15	3.00	3.02	3.02	4	4.00
	16:00		Middle	-	25.90	25.90		8.14	8.14		30.76	30.76		60.7	59.0		4.15	4.04		3.04	3.02		4	
15/5/2015	16:53	Fine	Middle	-	27.40	27.40	27.40	8.12	8.12	8.12	29.90	29.90	29.92	65.9	66.1	65.9	4.41	4.43	4.42	2.64	2.63	2.62	4	3.50
	16:55		Middle	-	27.40	27.40		8.12	8.12		29.93	29.93		66.0	65.6		4.43	4.40		2.61	2.59		3	
18/5/2015	17:47	Cloudy	Middle	-	26.60	26.60	26.65	8.08	8.08	8.08	28.93	28.93	28.93	78.9	78.8	78.5	5.37	5.36	5.34	3.16	3.25	3.16	2	2.50
	17:48		Middle	-	26.70	26.70		8.07	8.07		28.92	28.92		78.3	78.0		5.33	5.30		3.18	3.05		3	
20/5/2015	-	Amber Rainstorm	Middle	-	-	-		-	-		-	-		-	-		-	-		-	-		-	
	-		Middle	-	-	-		-	-		-	-		-	-		-	-		-	-		-	
22/5/2015	20:35	Cloudy	Middle	-	24.10	24.10	24.10	7.94	7.94	7.99	30.69	30.69	30.69	89.8	88.0	89.0	6.21	6.20	6.25	1.13	1.08	1.13	2	2.50
	20:36		Middle	-	24.10	24.10		8.04	8.04		30.69	30.69		89.3	89.0		6.30	6.28		1.18	1.11		3	
26/5/2015	0:20	Cloudy	Middle	-	27.10	27.10	27.15	8.04	8.04	8.04	28.02	28.02	28.02	78.5	80.3	79.2	5.33	5.45	5.37	3.16	3.04	2.99	4	4.50
	0:21		Middle	-	27.20	27.20		8.03	8.03		28.02	28.02		78.8	79.0		5.35	5.36		2.95	2.79		5	

Remarks:
Single underline denotes exceedance over Action Level.
Double underline denotes exceedance over Limit Level.



**Water Monitoring Result at C1 - HKCEC Extension
Mid-Flood Tide**

Date	Time	Weather Condition	Sampling Depth		Water Temperature		pH			Salinity			DO Saturation		DO		Turbidity			Suspended Solids				
			m		°C		-		ppt		%		mg/L		NTU		mg/L							
					Value	Average	Value	Average	Value	Average	Value	Average	Value	Average	Value	Average	Value	Average						
30/4/2015	16:30	Fine	Middle	3.0	26.40	26.40	26.45	8.12	8.12	8.14	32.12	32.12	32.13	87.4	88.7	87.4	5.87	5.96	5.87	1.47	1.45	1.47	2	2.00
	16:32		Middle	3.0	26.50	26.50		8.15	8.15		32.14	32.14		87.8	85.8		5.90	5.76		1.46	1.48		2	
2/5/2015	16:36	Sunny	Middle	2.5	25.40	25.40	25.45	8.26	8.26	8.27	31.50	31.50	31.50	77.2	76.6	76.2	5.30	5.25	5.23	2.87	2.91	3.07	3	3.50
	16:38		Middle	2.5	25.50	25.50		8.27	8.27		31.49	31.49		76.1	75.0		5.22	5.13		3.21	3.30		4	
4/5/2015	16:21	Cloudy	Middle	2.5	26.30	26.30	26.35	8.32	8.32	8.32	29.53	29.53	29.53	67.2	67.0	67.0	4.69	4.57	4.60	1.88	1.95	2.01	4	3.50
	16:23		Middle	2.5	26.40	26.40		8.32	8.32		29.52	29.52		67.4	66.3		4.60	4.53		2.19	2.02		3	
6/5/2015	21:11	Cloudy	Middle	2.5	26.00	26.00	25.90	8.12	8.12	8.13	30.77	30.77	30.77	73.3	76.5	74.4	5.01	5.23	5.08	4.17	4.30	4.17	5	5.00
	21:12		Middle	2.5	25.80	25.80		8.13	8.13		30.77	30.77		75.1	72.5		5.13	4.96		4.10	4.12		5	
8/5/2015	23:59	Cloudy	Middle	2.5	26.00	26.00	26.08	8.13	8.13	8.13	30.01	30.01	30.01	74.7	74.8	75.4	5.10	5.11	5.15	3.61	3.79	3.64	5	4.00
	0:00		Middle	2.5	26.20	26.10		8.12	8.12		30.01	30.01		75.9	76.1		5.18	5.19		3.67	3.50		3	
11/5/2015	11:09	Fine	Middle	3.0	25.80	25.80	25.90	7.72	7.72	7.72	29.80	29.80	29.75	68.8	66.8	67.1	4.73	4.59	4.60	17.38	17.44	<u>17.15</u>	3	3.50
	11:11		Middle	3.0	26.00	26.00		7.72	7.72		29.69	29.69		65.9	66.7		4.52	4.57		17.04	16.73		4	
13/5/2015	13:20	Fine	Middle	3.0	26.70	26.70	26.70	8.18	8.18	8.18	31.23	31.23	31.23	65.1	65.2	65.0	4.45	4.46	4.45	2.73	2.74	2.75	3	3.50
	13:22		Middle	3.0	26.70	26.70		8.18	8.18		31.23	31.23		64.6	65.2		4.41	4.46		2.78	2.76		4	
15/5/2015	16:15	Fine	Middle	2.5	26.40	26.40	26.45	8.17	8.17	8.16	30.26	30.26	30.26	63.4	64.3	63.8	4.31	4.37	4.33	6.20	6.19	6.20	5	5.00
	16:17		Middle	2.5	26.50	26.50		8.15	8.15		30.26	30.26		63.7	63.8		4.32	4.33		6.21	6.19		5	
18/5/2015	16:25	Cloudy	Middle	2.5	26.30	26.30	26.35	8.20	8.20	8.20	28.03	28.03	28.06	65.4	64.9	65.5	4.51	4.47	4.51	4.79	4.81	4.75	5	4.50
	16:27		Middle	2.5	26.40	26.40		8.20	8.20		28.08	28.08		66.3	65.3		4.57	4.50		4.69	4.69		4	
20/5/2015	-	Amber Rainstorm	Middle	-	-	-		-	-		-	-		-	-		-	-		-	-		-	
	-		Middle	-	-	-		-	-		-	-		-	-		-	-		-	-		-	
22/5/2015	22:55	Cloudy	Middle	2.0	24.00	24.00	24.00	8.00	8.00	8.02	31.56	31.56	31.56	83.2	84.1	83.7	5.85	5.91	5.89	5.05	5.03	4.88	6	6.50
	22:56		Middle	2.0	24.00	24.00		8.03	8.03		31.56	31.56		83.2	84.4		5.85	5.93		4.77	4.67		7	
26/5/2015	2:00	Cloudy	Middle	2.5	26.70	26.70	26.70	8.05	8.05	8.06	28.17	28.17	28.17	79.5	79.2	78.8	5.43	5.41	5.38	2.13	2.20	2.04	3	2.50
	2:01		Middle	2.5	26.70	26.70		8.06	8.06		28.17	28.17		78.5	78.0		5.36	5.33		1.88	1.96		2	

Remarks:
Single underline denotes exceedance over Action Level.
Double underline denotes exceedance over Limit Level.



**Water Monitoring Result at P1 - HKCEC Phase I
Mid-Flood Tide**

Date	Time	Weather Condition	Sampling Depth m	Water Temperature °C			pH -		Salinity ppt		DO Saturation %		DO mg/L		Turbidity NTU		Suspended Solids mg/L							
				Value	Average	Value	Average	Value	Average	Value	Average	Value	Average	Value	Average	Value	Average							
30/4/2015	-	Fine	Middle	-	-	-	-	-	-	-	-	-	-	-	-	-	-	-						
	-		Middle	-	-	-	-	-	-	-	-	-	-	-	-	-	-	-						
2/5/2015	16:20	Sunny	Middle	2.5	25.90	25.90	25.95	8.22	8.22	8.23	31.33	31.33	31.34	77.4	75.3	75.3	5.26	5.12	5.12	1.74	1.75	1.78	<2	<2
	16:22		Middle	2.5	26.00	26.00	25.95	8.23	8.23	8.23	31.34	31.34	31.34	74.5	74.1	75.3	5.06	5.04	5.12	1.76	1.85	1.78	<2	<2
4/5/2015	16:05	Cloudy	Middle	2.5	27.50	27.50	27.65	8.29	8.29	8.30	29.65	29.65	29.63	67.1	66.9	66.1	4.47	4.46	4.41	2.25	2.30	2.21	3	3.00
	16:07		Middle	2.5	27.80	27.80	27.65	8.30	8.30	8.30	29.61	29.61	29.63	65.6	64.7	66.1	4.37	4.32	4.41	2.13	2.15	2.21	3	3.00
6/5/2015	20:45	Cloudy	Middle	2.5	26.00	26.00	26.05	7.88	7.89	7.92	30.45	30.45	30.45	77.5	78.3	77.0	5.28	5.34	5.25	2.67	2.74	2.59	3	2.50
	20:46		Middle	2.5	26.10	26.10	26.05	7.94	7.95	7.92	30.45	30.45	30.45	76.2	76.0	77.0	5.19	5.17	5.25	2.42	2.51	2.59	2	2.50
8/5/2015	23:23	Cloudy	Middle	2.5	26.40	26.40	26.50	7.92	7.92	7.95	29.78	29.78	29.79	75.0	75.6	74.9	5.10	5.13	5.09	5.05	4.91	4.90	5	5.00
	23:24		Middle	2.5	26.60	26.60	26.50	7.97	7.97	7.95	29.79	29.79	29.79	74.7	74.3	74.9	5.07	5.05	5.09	4.78	4.86	4.90	5	5.00
11/5/2015	11:40	Fine	Middle	3.0	26.30	26.30	26.25	7.96	7.96	7.97	29.88	29.88	29.89	74.2	74.9	74.9	5.93	5.99	5.99	1.46	1.42	1.41	2	2.00
	11:42		Middle	3.0	26.20	26.20	26.25	7.97	7.97	7.97	29.89	29.89	29.89	75.4	75.2	74.9	6.04	6.00	5.99	1.38	1.36	1.41	<2	2.00
13/5/2015	15:00	Fine	Middle	3.0	26.60	26.60	26.70	8.22	8.22	8.22	31.12	31.12	31.12	67.2	67.8	67.3	4.53	4.56	4.53	2.99	2.99	3.00	4	5.00
	15:02		Middle	3.0	26.80	26.80	26.70	8.21	8.21	8.22	31.12	31.12	31.12	67.3	66.9	67.3	4.53	4.50	4.53	3.00	3.02	3.00	6	5.00
15/5/2015	15:55	Fine	Middle	2.5	26.70	26.70	26.70	8.15	8.15	8.15	29.85	29.85	29.85	65.2	65.9	65.9	4.42	4.47	4.47	2.54	2.64	2.62	4	3.50
	15:57		Middle	2.5	26.70	26.70	26.70	8.15	8.15	8.15	29.85	29.85	29.85	65.9	66.6	65.9	4.47	4.52	4.47	2.64	2.64	2.62	3	3.50
18/5/2015	16:05	Cloudy	Middle	2.5	26.90	26.90	26.95	8.21	8.21	8.21	28.06	28.06	28.06	71.9	72.1	71.9	4.90	4.91	4.90	4.68	4.71	4.70	6	6.00
	16:07		Middle	2.5	27.00	27.00	26.95	8.21	8.21	8.21	28.06	28.06	28.06	71.4	72.1	71.9	4.87	4.91	4.90	4.70	4.69	4.70	6	6.00
20/5/2015	-	Amber Rainstorm	Middle	-	-	-	-	-	-	-	-	-	-	-	-	-	-	-	-	-	-	-	-	
	-		Middle	-	-	-	-	-	-	-	-	-	-	-	-	-	-	-	-	-	-	-	-	-
22/5/2015	22:25	Cloudy	Middle	2.0	24.00	23.90	23.88	8.17	8.17	8.18	31.76	31.76	31.76	81.6	82.0	81.3	5.75	5.76	5.72	4.63	4.41	4.58	5	5.50
	22:26		Middle	2.0	23.80	23.80	23.88	8.18	8.18	8.18	31.76	31.76	31.76	80.8	80.9	81.3	5.68	5.69	5.72	4.50	4.76	4.58	6	5.50
26/5/2015	1:35	Cloudy	Middle	2.5	27.10	27.10	27.10	8.11	8.11	8.11	27.28	27.28	27.29	79.5	79.9	79.1	5.43	5.45	5.40	2.09	2.11	2.13	3	3.00
	1:36		Middle	2.5	27.10	27.10	27.10	8.10	8.10	8.11	27.29	27.29	27.29	78.8	78.1	79.1	5.38	5.33	5.40	2.19	2.14	2.13	3	3.00

Remarks:
Single underline denotes exceedance over Action Level.
Double underline denotes exceedance over Limit Level.



**Water Monitoring Result at P3 - APA
Mid-Flood Tide**

Date	Time	Weather Condition	Sampling Depth		Water Temperature		pH		Salinity		DO Saturation		DO		Turbidity		Suspended Solids							
			m		°C		-		ppt		%		mg/L		NTU		mg/L							
					Value	Average	Value	Average	Value	Average	Value	Average	Value	Average	Value	Average	Value	Average						
30/4/2015	16:47	Fine	Middle	3.0	26.60	26.60	26.60	8.16	8.16	8.17	32.03	32.03	32.03	81.7	80.8	81.2	5.47	5.42	5.44	1.37	1.37	1.37	<2	<2
	16:49		Middle	3.0	26.60	26.60	26.60	8.18	8.18	8.17	32.03	32.03	32.03	81.1	81.3	81.2	5.44	5.44	5.44	1.38	1.34	1.37	<2	<2
2/5/2015	16:24	Sunny	Middle	2.5	25.50	25.50	25.60	8.24	8.24	8.22	31.54	31.54	31.55	71.0	70.0	69.0	4.85	4.78	4.70	2.14	2.26	2.10	3	4.00
	16:26		Middle	2.5	25.70	25.70	25.60	8.19	8.19	8.22	31.56	31.56	31.55	68.0	67.0	69.0	4.65	4.50	4.70	2.14	1.84	2.10	5	4.00
4/5/2015	16:09	Cloudy	Middle	2.5	26.70	26.70	26.75	8.29	8.29	8.29	29.63	29.63	29.63	64.0	62.3	62.5	4.34	4.22	4.22	1.38	1.39	1.48	2	2.50
	16:11		Middle	2.5	26.80	26.80	26.75	8.28	8.28	8.29	29.62	29.62	29.63	61.9	61.9	62.5	4.19	4.13	4.22	1.52	1.64	1.48	3	2.50
6/5/2015	20:50	Cloudy	Middle	2.5	25.90	25.90	25.90	8.15	8.15	8.15	30.78	30.78	30.78	77.0	77.8	76.9	5.25	5.31	5.25	4.94	4.90	4.73	3	4.00
	20:51		Middle	2.5	25.90	25.90	25.90	8.15	8.15	8.15	30.78	30.77	30.78	77.3	75.6	76.9	5.27	5.16	5.25	4.47	4.62	4.73	5	4.00
8/5/2015	23:29	Cloudy	Middle	2.5	26.20	26.20	26.25	8.08	8.08	8.08	29.97	29.97	29.98	75.1	76.2	75.7	5.11	5.19	5.15	3.17	3.25	3.12	4	4.00
	23:30		Middle	2.5	26.30	26.30	26.25	8.08	8.08	8.08	29.98	29.98	29.98	75.5	76.0	75.7	5.14	5.17	5.15	3.04	3.01	3.12	4	4.00
11/5/2015	11:35	Fine	Middle	3.0	25.70	25.70	25.75	7.96	7.96	7.96	29.88	29.88	29.89	72.7	72.6	72.2	5.00	4.99	4.97	1.42	1.37	1.37	3	3.00
	11:37		Middle	3.0	25.80	25.80	25.75	7.96	7.96	7.96	29.89	29.89	29.89	72.0	71.5	72.2	4.95	4.92	4.97	1.35	1.32	1.37	3	3.00
13/5/2015	15:05	Fine	Middle	3.0	26.90	26.90	26.90	8.17	8.17	8.16	31.16	31.16	31.16	60.9	62.2	62.0	4.15	4.24	4.22	1.95	1.89	1.84	3	4.00
	15:07		Middle	3.0	26.90	26.90	26.90	8.15	8.15	8.16	31.16	31.16	31.16	62.1	62.8	62.0	4.23	4.27	4.22	1.76	1.75	1.84	5	4.00
15/5/2015	16:00	Fine	Middle	2.5	26.60	26.60	26.60	8.12	8.12	8.12	29.92	29.92	29.93	66.3	67.5	66.8	4.50	4.58	4.53	2.37	2.43	2.43	3	3.50
	16:02		Middle	2.5	26.60	26.60	26.60	8.11	8.11	8.12	29.93	29.93	29.93	67.3	65.9	66.8	4.56	4.49	4.53	2.45	2.48	2.43	4	3.50
18/5/2015	16:10	Cloudy	Middle	2.5	26.60	26.60	26.65	8.20	8.20	8.19	28.02	28.02	28.02	67.2	67.5	67.2	4.60	4.62	4.61	4.37	4.36	4.29	5	4.50
	16:12		Middle	2.5	26.70	26.70	26.65	8.18	8.18	8.19	28.02	28.02	28.02	66.7	67.5	67.2	4.57	4.63	4.61	4.21	4.23	4.29	4	4.50
20/5/2015	-	Amber Rainstorm	Middle	-	-	-	-	-	-	-	-	-	-	-	-	-	-	-	-	-	-	-	-	-
	-		Middle	-	-	-	-	-	-	-	-	-	-	-	-	-	-	-	-	-	-	-	-	-
22/5/2015	22:31	Cloudy	Middle	2.0	24.00	24.00	24.00	8.20	8.20	8.20	31.77	31.77	31.77	78.9	79.5	79.1	5.54	5.59	5.55	4.92	4.87	4.85	6	7.00
	22:32		Middle	2.0	24.00	24.00	24.00	8.20	8.20	8.20	31.77	31.77	31.77	78.7	79.2	79.1	5.52	5.56	5.55	4.79	4.81	4.85	8	7.00
26/5/2015	1:39	Cloudy	Middle	2.5	26.80	26.80	26.85	8.10	8.10	8.11	28.00	28.00	28.00	75.4	77.4	76.4	5.15	5.29	5.21	2.54	2.47	2.49	2	2.00
	1:40		Middle	2.5	26.90	26.90	26.85	8.11	8.11	8.11	28.00	28.00	28.00	76.8	75.8	76.4	5.24	5.17	5.21	2.45	2.49	2.49	2	2.00

Remarks:
Single underline denotes exceedance over Action Level.
Double underline denotes exceedance over Limit Level.



**Water Monitoring Result at P4 - SOC
Mid-Flood Tide**

Date	Time	Weather Condition	Sampling Depth		Water Temperature			pH			Salinity			DO Saturation			DO			Turbidity			Suspended Solids	
			m		°C		-		ppt		%		mg/L		NTU		mg/L							
					Value	Average	Value	Average	Value	Average	Value	Average	Value	Average	Value	Average	Value	Average						
30/4/2015	16:40	Fine	Middle	3.0	26.10	26.10	26.10	8.19	8.19	8.20	32.31	32.31	32.31	81.7	83.5	84.0	5.52	5.67	5.68	1.42	1.39	1.39	3	2.50
	16:42		Middle	3.0	26.10	26.10		8.20	8.20		32.31	32.31		85.0	85.8		5.74	5.80		1.38	1.38		2	
2/5/2015	16:28	Sunny	Middle	2.5	25.90	25.90	25.70	8.24	8.24	8.25	31.49	31.49	31.50	80.4	78.1	77.4	5.50	5.34	5.29	2.04	2.28	2.23	5	5.50
	16:30		Middle	2.5	25.50	25.50		8.25	8.25		31.50	31.50		76.1	74.8		5.20	5.12		2.30	2.31		6	
4/5/2015	16:13	Cloudy	Middle	2.5	26.40	26.40	26.45	8.28	8.28	8.28	29.65	29.65	29.65	61.0	61.1	60.6	4.15	4.16	4.12	1.64	1.64	1.64	2	3.00
	16:15		Middle	2.5	26.50	26.50		8.28	8.28		29.64	29.64		60.9	59.2		4.15	4.03		1.64	1.64		4	
6/5/2015	20:54	Cloudy	Middle	2.5	26.10	26.10	26.10	8.16	8.16	8.17	30.79	30.79	30.80	84.8	85.9	85.8	5.77	5.85	5.84	4.08	4.02	3.96	4	4.00
	20:55		Middle	2.5	26.10	26.10		8.17	8.17		30.80	30.80		85.9	86.7		5.85	5.90		3.90	3.85		4	
8/5/2015	23:37	Cloudy	Middle	2.5	26.30	26.30	26.35	8.12	8.12	8.12	29.98	29.98	29.98	83.2	84.1	83.2	5.66	5.70	5.65	3.42	3.40	3.36	5	5.00
	23:38		Middle	2.5	26.40	26.40		8.12	8.12		29.98	29.98		82.3	83.3		5.59	5.66		3.33	3.29		5	
11/5/2015	11:29	Fine	Middle	3.0	25.90	25.90	26.00	7.94	7.94	7.95	29.97	29.97	29.97	74.7	72.6	72.8	5.11	4.97	4.98	1.48	1.47	1.47	3	3.00
	11:31		Middle	3.0	26.10	26.10		7.95	7.95		29.97	29.97		72.0	72.0		4.93	4.92		1.46	1.45		3	
13/5/2015	15:10	Fine	Middle	3.0	25.80	25.80	25.85	8.17	8.17	8.18	31.19	31.19	31.19	66.9	67.6	67.3	4.57	4.62	4.60	3.00	3.02	3.02	4	4.00
	15:12		Middle	3.0	25.90	25.90		8.18	8.18		31.18	31.18		67.1	67.7		4.59	4.62		3.02	3.04		4	
15/5/2015	16:05	Fine	Middle	2.5	26.40	26.40	26.50	8.14	8.14	8.15	30.22	30.22	30.22	65.8	65.0	65.1	4.47	4.40	4.42	3.64	3.71	3.70	4	4.50
	16:07		Middle	2.5	26.60	26.60		8.16	8.16		30.21	30.21		64.6	64.8		4.39	4.42		3.73	3.73		5	
18/5/2015	16:15	Cloudy	Middle	2.5	26.40	26.40	26.45	8.19	8.19	8.19	28.04	28.04	28.05	65.1	64.9	66.0	4.47	4.46	4.53	4.57	4.42	4.47	4	4.50
	16:17		Middle	2.5	26.50	26.50		8.19	8.19		28.06	28.06		67.2	66.7		4.61	4.58		4.40	4.48		5	
20/5/2015	-	Amber Rainstorm	Middle	-	-	-		-	-		-	-		-	-		-	-		-	-		-	
	-		Middle	-	-	-		-	-		-	-		-	-		-	-		-	-		-	
22/5/2015	22:50	Cloudy	Middle	2.0	24.00	24.00	24.00	8.14	8.14	8.15	31.73	31.73	31.73	89.9	90.6	90.1	6.32	6.36	6.33	4.94	4.90	4.86	5	5.50
	22:51		Middle	2.0	24.00	24.00		8.15	8.15		31.73	31.73		90.1	89.8		6.32	6.31		4.83	4.78		6	
26/5/2015	1:44	Cloudy	Middle	2.5	26.90	26.90	26.90	8.10	8.10	8.11	28.07	28.07	28.07	83.5	85.3	84.3	5.69	5.81	5.75	2.82	2.65	2.66	3	3.50
	1:45		Middle	2.5	26.90	26.90		8.11	8.11		28.06	28.06		84.8	83.6		5.78	5.70		2.60	2.58		4	

Remarks:
Single underline denotes exceedance over Action Level.
Double underline denotes exceedance over Limit Level.



**Water Monitoring Result at P5 - WCT / RT / IT
Mid-Flood Tide**

Date	Time	Weather Condition	Sampling Depth		Water Temperature		pH			Salinity		DO Saturation		DO		Turbidity		Suspended Solids						
			m		°C		-			ppt		%		mg/L		NTU		mg/L						
					Value	Average	Value	Average	Value	Average	Value	Average	Value	Average	Value	Average	Value	Average						
30/4/2015	16:35	Fine	Middle	3.0	26.50	26.50	26.55	8.17	8.17	8.18	32.18	32.18	32.18	84.0	85.4	85.0	5.64	5.70	5.69	1.46	1.45	1.45	2	2.50
	16:37		Middle	3.0	26.60	26.60		8.19	8.19		32.18	32.18		84.9	85.6		5.70	5.73		1.45	1.45		3	
2/5/2015	16:32	Sunny	Middle	2.5	25.50	25.50	25.50	8.26	8.26	8.26	31.69	31.39	31.47	69.6	67.8	67.4	4.76	4.64	4.60	1.97	2.13	2.09	3	3.50
	16:34		Middle	2.5	25.50	25.50		8.25	8.25		31.40	31.40		66.3	65.9		4.54	4.46		2.13	2.14		4	
4/5/2015	16:17	Cloudy	Middle	2.5	26.40	26.40	26.45	8.30	8.30	8.31	29.54	29.54	29.54	64.4	64.0	64.2	4.39	4.36	4.38	1.50	1.76	1.61	3	2.50
	16:19		Middle	2.5	26.50	26.50		8.32	8.32		29.53	29.53		63.9	64.6		4.36	4.41		1.64	1.53		2	
6/5/2015	21:01	Cloudy	Middle	2.5	25.80	25.80	25.85	8.17	8.17	8.17	30.78	30.78	30.78	79.5	80.0	79.9	5.43	5.47	5.47	2.87	2.83	2.80	5	4.50
	21:02		Middle	2.5	25.90	25.90		8.17	8.17		30.77	30.77		79.9	80.3		5.47	5.49		2.71	2.80		4	
8/5/2015	23:50	Cloudy	Middle	2.5	26.20	26.20	26.25	8.11	8.11	8.12	30.06	30.06	30.06	84.4	84.2	83.9	5.72	5.72	5.70	4.40	4.76	4.63	6	5.00
	23:51		Middle	2.5	26.30	26.30		8.12	8.12		30.06	30.06		83.0	84.1		5.65	5.72		4.71	4.64		4	
11/5/2015	11:20	Fine	Middle	3.0	26.30	26.30	26.30	7.10	7.10	7.11	30.08	30.08	30.08	71.0	70.9	70.3	4.84	4.83	4.79	3.79	3.81	3.82	3	3.00
	11:22		Middle	3.0	26.30	26.30		7.12	7.12		30.08	30.08		70.3	69.1		4.79	4.71		3.83	3.84		3	
13/5/2015	15:15	Fine	Middle	3.0	25.80	25.80	25.80	8.19	8.19	8.20	31.21	31.21	31.21	66.3	66.8	66.4	4.52	4.56	4.53	3.22	3.17	3.19	5	4.00
	15:17		Middle	3.0	25.80	25.80		8.20	8.20		31.21	31.21		66.5	66.0		4.53	4.50		3.16	3.19		3	
15/5/2015	16:10	Fine	Middle	2.5	26.40	26.40	26.45	8.16	8.16	8.16	30.28	30.28	30.28	63.5	64.7	64.0	4.31	4.39	4.34	4.46	4.40	4.46	7	6.50
	16:12		Middle	2.5	26.50	26.50		8.16	8.16		30.28	30.28		63.9	63.8		4.33	4.31		4.47	4.52		6	
18/5/2015	16:20	Cloudy	Middle	2.5	26.30	26.30	26.35	8.20	8.20	8.20	27.97	27.97	28.00	64.2	64.2	64.4	4.42	4.42	4.43	4.40	4.48	4.49	4	3.50
	16:22		Middle	2.5	26.40	26.40		8.20	8.20		28.02	28.02		64.1	65.1		4.41	4.48		4.54	4.54		3	
20/5/2015	-	Amber Rainstorm	Middle	-	-	-		-	-		-	-		-	-		-	-		-	-		-	
	-		Middle	-	-	-		-	-		-	-		-	-		-	-		-	-		-	
22/5/2015	22:42	Cloudy	Middle	2.0	23.90	23.90	23.90	8.18	8.18	8.19	31.77	31.77	31.77	82.2	82.3	82.1	5.78	5.79	5.77	4.89	4.78	4.80	6	6.50
	22:43		Middle	2.0	23.90	23.90		8.19	8.19		31.77	31.77		82.1	81.6		5.77	5.74		4.73	4.80		7	
26/5/2015	1:54	Cloudy	Middle	2.5	26.70	26.70	26.75	8.11	8.11	8.11	28.21	28.21	28.21	73.8	75.3	75.8	5.04	5.13	5.17	2.19	2.21	2.15	2	2.00
	1:55		Middle	2.5	26.80	26.80		8.11	8.11		28.21	28.21		76.1	78.0		5.19	5.32		2.12	2.08		2	

Remarks:
Single underline denotes exceedance over Action Level.
Double underline denotes exceedance over Limit Level.



**Water Monitoring Result at RW21-P789 - Sun Hung Kai Centre
Mid-Flood Tide**

Date	Time	Weather Condition	Sampling Depth		Water Temperature		pH			Salinity		DO Saturation		DO		Turbidity		Suspended Solids						
			m		°C		-			ppt		%		mg/L		NTU		mg/L						
					Value	Average	Value	Average	Value	Average	Value	Average	Value	Average	Value	Average	Value	Average						
30/4/2015	16:20	Fine	Middle	2.5	26.90	26.90	26.95	8.15	8.15	8.15	31.80	31.80	31.80	84.3	83.2	83.4	5.62	5.56	5.57	1.81	1.77	1.70	3	3.00
	16:22		Middle	2.5	27.00	27.00		8.15	8.15		31.80	31.80		83.0	83.2		5.54	5.56		1.65	1.56		3	
2/5/2015	16:06	Sunny	Middle	3.0	26.70	26.70	26.80	8.15	8.15	8.17	31.63	31.63	31.65	89.8	90.6	90.3	6.11	6.16	6.14	2.31	2.37	2.32	4	5.00
	16:08		Middle	3.0	26.90	26.90		8.18	8.18		31.66	31.66		90.5	90.3		6.16	6.14		2.30	2.28		6	
4/5/2015	19:20	Cloudy	Middle	3.0	26.50	26.50	26.50	8.20	8.20	8.20	30.23	30.23	30.23	82.6	84.5	83.1	5.60	5.73	5.64	2.97	2.68	2.68	2	3.00
	19:21		Middle	3.0	26.50	26.50		8.20	8.20		30.23	30.23		83.1	82.0		5.63	5.58		2.59	2.49		4	
6/5/2015	18:45	Cloudy	Middle	3.0	26.50	26.50	26.55	8.11	8.11	8.11	30.24	30.24	30.25	84.1	86.1	85.0	5.69	5.82	5.75	2.40	2.47	2.43	2	3.00
	18:46		Middle	3.0	26.60	26.60		8.11	8.11		30.25	30.25		85.5	84.3		5.79	5.71		2.42	2.44		4	
8/5/2015	21:47	Cloudy	Middle	3.0	27.20	27.20	27.25	8.06	8.06	8.07	29.73	29.73	29.73	82.4	83.0	82.3	5.53	5.57	5.52	2.11	2.45	2.29	5	4.00
	21:48		Middle	3.0	27.30	27.30		8.07	8.07		29.73	29.73		82.1	81.5		5.51	5.46		2.31	2.29		3	
11/5/2015	10:15	Fine	Middle	3.0	26.20	26.20	26.25	8.16	8.16	8.16	29.87	29.87	29.87	62.2	64.1	64.1	4.24	4.37	4.37	1.88	1.87	1.89	3	2.50
	10:17		Middle	3.0	26.30	26.30		8.16	8.16		29.87	29.87		65.1	65.0		4.44	4.43		1.88	1.91		2	
13/5/2015	15:35	Fine	Middle	3.0	25.50	25.50	25.50	8.18	8.18	8.18	31.32	31.32	31.32	62.9	63.6	63.4	4.31	4.37	4.35	3.24	3.26	3.26	3	2.50
	15:37		Middle	3.0	25.50	25.50		8.18	8.18		31.31	31.31		63.7	63.5		4.37	4.36		3.28	3.26		2	
15/5/2015	16:20	Fine	Middle	3.0	26.30	26.30	26.35	8.16	8.16	8.16	29.76	29.76	29.77	67.0	67.9	66.8	4.57	4.63	4.57	3.26	3.25	3.27	5	5.00
	16:22		Middle	3.0	26.40	26.40		8.16	8.16		29.77	29.77		67.1	65.2		4.57	4.51		3.27	3.29		5	
18/5/2015	17:07	Cloudy	Middle	3.0	28.80	28.80	28.80	8.12	8.12	8.13	28.27	28.27	28.27	81.6	80.7	80.3	5.56	5.50	5.48	5.45	5.40	5.38	6	6.00
	17:08		Middle	3.0	28.80	28.80		8.13	8.13		28.27	28.27		81.0	78.0		5.53	5.31		5.38	5.29		6	
20/5/2015	-	Amber Rainstorm	Middle	-	-	-		-	-		-	-		-	-		-	-		-	-		-	
	-		Middle	-	-	-		-	-		-	-		-	-		-	-		-	-		-	
22/5/2015	21:15	Cloudy	Middle	3.0	24.00	24.00	24.00	8.02	8.20	8.08	30.38	30.38	30.38	80.3	80.8	80.3	5.69	5.71	5.68	3.35	3.37	3.32	3	3.50
	21:16		Middle	3.0	24.00	24.00		8.05	8.04		30.38	30.38		80.4	79.7		5.69	5.64		3.41	3.14		4	
26/5/2015	1:09	Cloudy	Middle	2.5	26.90	26.90	26.93	8.05	8.05	8.05	28.21	28.21	28.21	73.0	74.1	73.5	4.97	5.04	5.00	2.70	2.63	2.68	2	2.50
	1:10		Middle	2.5	27.00	26.90		8.05	8.05		28.21	28.21		73.1	73.9		4.97	5.03		2.65	2.74		3	

Remarks:
Single underline denotes exceedance over Action Level.
Double underline denotes exceedance over Limit Level.



**Water Monitoring Result at WSD19 - Sheung Wan
Mid-Flood Tide**

Date	Time	Weather Condition	Sampling Depth		Water Temperature		pH			Salinity			DO Saturation		DO		Turbidity		Suspended Solids					
			m		°C		-		ppt		%		mg/L		NTU		mg/L							
					Value	Average	Value	Average	Value	Average	Value	Average	Value	Average	Value	Average	Value	Average						
30/4/2015	15:30	Fine	Middle	3.0	26.50	26.50	26.65	8.12	8.12	8.17	31.79	31.79	31.79	93.2	93.1	92.9	6.32	6.30	6.26	4.36	4.16	4.17	3	4.00
	15:32		Middle	3.0	26.80	26.80		8.22	8.22		31.79	31.79		92.7	92.5		92.9	6.21		6.19	6.26		4.04	
2/5/2015	18:12	Sunny	Middle	3.5	25.50	25.50	25.55	8.19	8.19	8.21	31.59	31.59	31.57	82.8	80.4	80.7	5.67	5.62	5.55	4.96	4.93	4.90	3	3.50
	18:14		Middle	3.5	25.60	25.60		8.23	8.23		31.54	31.54		78.5	81.1		80.7	5.36		5.54	5.55		4.88	
4/5/2015	18:15	Cloudy	Middle	3.0	26.70	26.70	26.65	8.11	8.11	8.12	29.91	29.91	29.91	90.7	91.4	91.1	6.15	6.20	6.18	3.20	2.57	2.84	5	4.00
	18:16		Middle	3.0	26.60	26.60		8.13	8.13		29.91	29.91		90.3	91.9		91.1	6.13		6.23	6.18		2.86	
6/5/2015	19:56	Cloudy	Middle	2.5	26.50	26.50	26.55	7.96	7.97	7.98	29.85	29.85	29.86	90.0	89.7	90.1	6.10	6.07	6.10	3.31	3.28	3.33	4	3.50
	19:57		Middle	2.5	26.60	26.60		7.99	8.00		29.86	29.86		90.3	90.4		90.1	6.11		6.12	6.10		3.33	
8/5/2015	22:20	Cloudy	Middle	2.5	26.80	26.80	26.85	8.12	8.12	8.12	29.82	29.82	29.82	88.1	88.2	88.9	5.95	5.94	6.00	4.77	4.65	4.68	5	4.50
	22:21		Middle	2.5	26.90	26.90		8.12	8.12		29.82	29.82		89.9	89.2		88.9	6.07		6.02	6.00		4.63	
11/5/2015	9:35	Fine	Middle	3.0	26.10	26.10	26.15	8.16	8.16	8.17	29.37	29.37	29.37	65.8	66.9	66.7	4.51	4.59	4.57	3.20	3.20	3.21	7	7.50
	9:37		Middle	3.0	26.20	26.20		8.18	8.18		29.37	29.37		66.6	67.5		66.7	4.56		4.63	4.57		3.21	
13/5/2015	11:17	Fine	Middle	3.0	25.80	25.80	25.80	8.21	8.21	8.22	30.43	30.43	30.44	69.4	70.6	70.2	4.76	4.83	4.81	4.82	4.82	4.79	9	9.50
	11:19		Middle	3.0	25.80	25.80		8.23	8.23		30.44	30.44		70.5	70.3		70.2	4.82		4.81	4.81		4.81	
15/5/2015	15:01	Fine	Middle	2.5	28.10	28.10	28.25	8.12	8.12	8.12	29.47	29.47	29.47	64.1	65.7	64.5	4.24	4.34	4.27	5.15	4.98	5.08	4	5.00
	15:03		Middle	2.5	28.40	28.40		8.11	8.11		29.47	29.47		65.3	62.8		64.5	4.31		4.19	4.27		5.10	
18/5/2015	18:10	Cloudy	Middle	2.0	27.10	27.10	27.10	8.10	8.10	8.10	28.58	28.58	28.58	81.9	82.9	82.4	5.55	5.62	5.59	8.72	8.76	8.73	8	7.50
	18:11		Middle	2.0	27.10	27.10		8.10	8.10		28.57	28.57		82.1	82.7		82.4	5.57		5.60	5.59		8.64	
20/5/2015	-	Amber Rainstorm	Middle	-	-	-		-	-		-	-		-	-		-	-		-	-		-	
	-		Middle	-	-	-		-	-		-	-		-	-		-	-		-	-		-	
22/5/2015	21:45	Cloudy	Middle	2.5	24.00	24.00	24.00	8.14	8.14	8.14	30.92	30.92	30.92	87.0	88.7	87.7	6.13	6.26	6.18	4.44	4.30	4.32	6	6.00
	21:46		Middle	2.5	24.00	24.00		8.14	8.14		30.92	30.92		87.8	87.1		87.7	6.19		6.14	6.18		4.27	
26/5/2015	2:37	Cloudy	Middle	2.5	26.90	26.90	26.93	8.05	8.05	8.05	27.52	27.52	27.52	82.4	83.2	82.2	5.62	5.68	5.61	3.64	3.67	3.60	4	4.00
	2:38		Middle	2.5	27.00	26.90		8.05	8.05		27.52	27.52		82.1	81.0		82.2	5.60		5.53	5.61		3.55	

Remarks:
Single underline denotes exceedance over Action Level.
Double underline denotes exceedance over Limit Level.



**Water Monitoring Result at C7 - Windsor House
Mid-Ebb Tide**

Date	Time	Weather Condition	Sampling Depth		Water Temperature			pH			Salinity		DO Saturation		DO		Turbidity		Suspended Solids					
					°C			-			ppt		%		mg/L		NTU		mg/L					
					Value	Average		Value	Average		Value	Average	Value	Average	Value	Average	Value	Average	Value	Average				
30/4/2015	9:01	Fine	Middle	-	25.20	25.20	25.20	8.12	8.12	8.12	31.62	31.62	31.62	83.4	83.4	82.6	5.73	5.74	5.68	1.52	1.52	1.52	<2	<2
	9:02		Middle	-	25.20	25.20		8.12	8.12		31.62	31.62		82.3	81.1		5.66	5.58		1.53	1.51		<2	
2/5/2015	12:05	Fine	Middle	-	25.70	25.70	25.75	8.13	8.13	8.13	31.72	31.72	31.71	83.4	83.0	82.7	5.68	5.65	5.63	1.06	1.19	1.13	3	3.00
	12:07		Middle	-	25.80	25.80		8.13	8.13		31.69	31.69		83.2	81.3		5.66	5.53		1.14	1.14		3	
4/5/2015	10:15	Fine	Middle	-	26.20	26.20	26.20	8.25	8.25	8.25	30.27	30.27	30.31	73.3	70.5	69.5	4.93	4.77	4.70	2.27	2.27	2.28	4	4.00
	10:17		Middle	-	26.20	26.20		8.24	8.24		30.35	30.35		68.3	65.8		4.65	4.46		2.29	2.28		4	
6/5/2015	13:30	Sunny	Middle	-	26.20	26.20	26.25	8.10	8.10	8.10	31.08	31.08	31.07	57.2	57.3	57.7	3.88	3.89	3.89	1.82	1.84	1.82	4	3.50
	13:32		Middle	-	26.30	26.30		8.09	8.09		31.05	31.05		57.3	59.1		3.89	3.91		1.81	1.79		3	
8/5/2015	16:00	Cloudy	Middle	-	26.40	26.40	26.45	7.97	7.97	7.97	30.30	30.30	30.29	57.9	59.6	59.7	3.93	4.05	4.05	1.64	1.76	1.74	4	4.00
	16:02		Middle	-	26.50	26.50		7.97	7.97		30.27	30.27		60.9	60.5		4.13	4.10		1.76	1.78		4	
11/5/2015	-	Amber Rainstorm	Middle	-	-	-		-	-		-	-		-	-		-	-		-	-		-	
	-		Middle	-	-	-		-	-		-	-		-	-		-	-		-	-		-	
13/5/2015	18:10	Cloudy	Middle	-	25.90	25.90	25.90	8.10	8.10	8.10	30.84	30.84	30.84	84.2	85.9	85.0	5.75	5.83	5.80	2.30	2.20	2.36	3	2.50
	18:11		Middle	-	25.90	25.90		8.10	8.10		30.84	30.84		85.0	84.9		5.80	5.80		2.69	2.23		2	
15/5/2015	10:11	Fine	Middle	-	27.00	27.00	27.05	8.13	8.13	8.12	30.34	30.34	30.34	62.9	62.6	63.3	4.23	4.27	4.30	4.81	4.84	4.85	6	5.50
	10:13		Middle	-	27.10	27.10		8.11	8.11		30.33	30.33		62.7	64.9		4.35	4.36		4.85	4.89		5	
18/5/2015	11:31	Cloudy	Middle	-	26.50	26.50	26.60	8.08	8.08	8.08	29.33	29.33	29.33	62.9	63.5	63.2	4.27	4.32	4.30	3.94	3.99	4.02	3	3.00
	11:33		Middle	-	26.70	26.70		8.08	8.08		29.33	29.33		63.7	62.8		4.33	4.26		3.99	4.15		3	
20/5/2015	13:58	Cloudy	Middle	-	26.50	26.50	26.55	8.00	8.00	8.02	27.61	27.61	27.61	62.2	61.2	60.6	4.28	4.22	4.17	5.75	5.75	5.75	3	2.50
	14:00		Middle	-	26.60	26.60		8.03	8.03		27.61	27.61		60.3	58.8		4.14	4.04		5.75	5.75		2	
22/5/2015	15:45	Cloudy	Middle	-	24.60	24.60	24.60	8.17	8.17	8.18	31.65	31.65	31.65	59.3	57.1	57.3	4.12	3.97	3.98	3.14	3.14	3.09	4	4.50
	15:47		Middle	-	24.60	24.60		8.18	8.18		31.65	31.65		56.5	56.2		3.92	3.90		3.05	3.03		5	
26/5/2015	15:35	Cloudy	Middle	-	26.40	26.40	26.40	8.00	8.00	8.02	27.58	27.58	27.59	61.6	60.1	59.9	4.25	4.14	4.13	2.34	2.31	2.31	3	3.00
	15:37		Middle	-	26.40	26.40		8.04	8.04		27.59	27.59		59.1	58.9		4.07	4.06		2.28	2.29		3	

Remarks:
Single underline denotes exceedance over Action Level.
Double underline denotes exceedance over Limit Level.



**Water Monitoring Result at C1 - HKCEC
Mid-Ebb Tide**

Date	Time	Weather Condition	Sampling Depth		Water Temperature			pH			Salinity		DO Saturation		DO		Turbidity		Suspended Solids					
					°C			-			ppt		%		mg/L		NTU		mg/L					
					Value	Average		Value	Average		Value	Average	Value	Average	Value	Average	Value	Average	Value	Average				
30/4/2015	10:52	Fine	Middle	2.5	25.80	25.80	25.90	7.49	7.49	7.49	31.38	31.38	31.38	87.7	87.0	85.8	5.97	5.92	5.84	2.35	2.59	2.46	3	2.50
	10:54		Middle	2.5	26.00	26.00		7.48	7.48		31.38	31.38		85.5	82.8		5.81	5.64		2.51	2.38		2	
2/5/2015	11:16	Fine	Middle	2.5	25.30	25.30	25.30	8.24	8.24	8.25	31.80	31.80	31.80	77.1	76.4	76.0	5.29	5.24	5.21	4.84	4.72	4.68	6	5.00
	11:18		Middle	2.5	25.30	25.30		8.25	8.25		31.79	31.79		75.6	75.0		5.18	5.14		4.60	4.56		4	
4/5/2015	14:00	Fine	Middle	2.5	26.50	26.50	26.55	8.29	8.29	8.29	30.09	30.09	30.09	66.2	65.6	64.6	4.49	4.46	4.38	2.13	2.13	2.11	4	4.50
	14:02		Middle	2.5	26.60	26.60		8.29	8.29		30.08	30.08		64.0	62.4		4.33	4.23		2.04	2.12		5	
6/5/2015	14:51	Sunny	Middle	2.5	26.10	26.10	26.10	8.23	8.23	8.23	30.36	30.36	30.36	59.6	59.8	59.9	4.07	4.08	4.09	2.56	2.64	2.64	3	3.00
	14:53		Middle	2.5	26.10	26.10		8.23	8.23		30.36	30.36		60.5	59.7		4.13	4.08		2.65	2.69		3	
8/5/2015	14:56	Cloudy	Middle	2.5	26.40	26.40	26.45	8.20	8.20	8.20	29.55	29.55	29.56	64.0	64.8	64.7	4.35	4.41	4.41	2.95	3.00	2.96	5	4.00
	14:58		Middle	2.5	26.50	26.50		8.19	8.19		29.57	29.57		64.8	65.1		4.42	4.44		3.00	2.87		3	
11/5/2015	-	Amber Rainstorm	Middle	-	-	-		-	-		-	-		-	-		-	-		-	-		-	
	-		Middle	-	-	-		-	-		-	-		-	-		-	-		-	-		-	
13/5/2015	21:08	Cloudy	Middle	2.5	25.80	25.80	25.85	8.19	8.19	8.20	30.68	30.68	30.68	81.0	84.4	83.7	5.54	5.77	5.72	2.57	2.51	2.58	5	4.00
	21:09		Middle	2.5	25.90	25.90		8.20	8.20		30.68	30.68		84.8	84.4		5.79	5.77		2.55	2.68		3	
15/5/2015	9:18	Fine	Middle	2.5	26.10	26.10	26.05	7.94	7.94	7.94	30.24	30.25	30.29	62.6	61.6	61.3	4.27	4.21	4.19	3.89	3.89	3.80	6	5.50
	9:20		Middle	2.5	26.00	26.00		7.94	7.94		30.32	30.33		61.0	60.1		4.16	4.11		3.73	3.68		5	
18/5/2015	14:55	Cloudy	Middle	2.5	26.40	26.40	26.40	8.21	8.21	8.21	28.34	28.34	28.36	68.6	68.5	68.7	4.71	4.70	4.72	5.06	5.00	4.94	3	3.50
	14:57		Middle	2.5	26.40	26.40		8.21	8.21		28.37	28.37		68.7	69.0		4.72	4.74		4.84	4.85		4	
20/5/2015	14:50	Cloudy	Middle	2.5	26.30	26.30	26.30	8.16	8.16	8.16	27.08	27.08	27.08	65.1	66.4	66.3	4.51	4.60	4.60	4.82	4.86	4.87	5	4.50
	14:52		Middle	2.5	26.30	26.30		8.16	8.16		27.08	27.08		66.9	66.9		4.64	4.64		4.90	4.91		4	
22/5/2015	15:05	Cloudy	Middle	2.5	24.40	24.40	24.40	8.24	8.24	8.24	31.42	31.42	31.43	64.4	64.8	64.5	4.50	4.53	4.51	3.52	3.52	3.51	2	3.00
	15:07		Middle	2.5	24.40	24.40		8.24	8.24		31.44	31.44		64.6	64.0		4.52	4.47		3.52	3.46		4	
26/5/2015	17:28	Cloudy	Middle	3.0	26.20	26.20	26.20	8.21	8.21	8.21	25.87	25.87	25.87	68.5	67.4	66.8	4.78	4.71	4.66	2.30	2.31	2.33	3	3.50
	17:30		Middle	3.0	26.20	26.20		8.21	8.21		25.87	25.87		66.9	64.2		4.65	4.49		2.34	2.35		4	

Remarks:
Single underline denotes exceedance over Action Level.
Double underline denotes exceedance over Limit Level.



**Water Monitoring Result at P1 - HKCEC Phase I
Mid-Ebb Tide**

Date	Time	Weather Condition	Sampling Depth		Water Temperature			pH			Salinity		DO Saturation		DO		Turbidity		Suspended Solids					
					°C			-			ppt		%		mg/L		NTU		mg/L					
					Value	Average		Value	Average		Value	Average	Value	Average	Value	Average	Value	Average	Value	Average				
30/4/2015	11:30	Fine	Middle	2.5	25.90	25.90	25.90	8.06	8.06	8.06	31.32	31.32	31.32	93.5	93.1	92.7	6.37	6.34	6.32	1.64	1.69	1.68	<2	<2
	11:32		Middle	2.5	25.90	25.90		8.06	8.06		31.32	31.32		92.5	91.7		6.30	6.25		1.72	1.68			
2/5/2015	11:00	Fine	Middle	2.5	26.10	26.10	26.10	8.11	8.11	8.14	31.85	31.85	31.85	84.7	81.9	80.6	5.73	5.54	5.44	2.11	2.37	2.33	6	5.50
	11:02		Middle	2.5	26.10	26.10		8.16	8.16		31.85	31.85		78.3	77.3		5.29	5.21		2.49	2.36		5	
4/5/2015	13:45	Fine	Middle	2.5	28.20	28.20	28.30	8.14	8.14	8.17	30.26	30.26	30.27	64.9	63.0	62.9	4.26	4.12	4.12	1.53	1.47	1.48	6	5.00
	13:47		Middle	2.5	28.40	28.40		8.20	8.20		30.28	30.28		61.9	61.7		4.05	4.05		1.46	1.44		4	
6/5/2015	14:35	Sunny	Middle	2.5	26.50	26.50	26.60	8.20	8.20	8.21	30.46	30.46	30.46	64.1	61.9	60.2	4.33	4.19	4.07	2.31	2.35	2.27	3	3.00
	14:37		Middle	2.5	26.70	26.70		8.21	8.21		30.46	30.46		58.0	56.8		3.92	3.83		2.15	2.25		3	
8/5/2015	14:40	Cloudy	Middle	2.5	26.90	26.90	27.05	8.15	8.15	8.17	29.33	29.33	29.26	63.4	64.2	62.8	4.29	4.34	4.24	2.76	2.75	2.77	6	6.00
	14:42		Middle	2.5	27.20	27.20		8.18	8.18		29.18	29.18		63.0	60.6		4.24	4.08		2.76	2.82		6	
11/5/2015	-	Amber Rainstorm	Middle	-	-	-		-	-		-	-		-	-		-	-		-	-		-	
	-		Middle	-	-	-		-	-		-	-		-	-		-	-		-	-		-	
13/5/2015	20:40	Cloudy	Middle	2.5	25.90	25.90	25.90	8.25	8.25	8.25	30.78	30.78	30.78	84.3	83.2	84.5	5.76	5.69	5.78	3.17	3.05	3.06	4	3.00
	20:41		Middle	2.5	25.90	25.90		8.25	8.25		30.77	30.77		84.1	86.3		5.75	5.90		3.03	2.99		2	
15/5/2015	9:51	Fine	Middle	2.5	26.50	26.50	26.55	8.03	8.03	8.03	30.24	30.24	30.23	70.5	70.4	69.7	4.77	4.77	4.72	2.67	2.64	2.70	6	5.50
	9:53		Middle	2.5	26.60	26.60		8.02	8.02		30.21	30.21		69.6	68.3		4.72	4.63		2.69	2.79		5	
18/5/2015	14:35	Cloudy	Middle	2.5	27.20	27.20	27.30	8.20	8.20	8.20	28.69	28.69	28.69	71.3	72.5	72.1	4.81	4.90	4.87	4.22	4.28	4.25	4	5.00
	14:37		Middle	2.5	27.40	27.40		8.20	8.20		28.69	28.69		73.3	71.3		4.94	4.81		4.25	4.26		6	
20/5/2015	14:30	Cloudy	Middle	2.5	26.80	26.80	26.80	8.12	8.12	8.14	26.94	26.94	26.94	69.7	70.9	70.5	4.79	4.87	4.84	4.31	4.29	4.30	4	3.50
	14:32		Middle	2.5	26.80	26.80		8.15	8.15		26.94	26.94		71.1	70.3		4.88	4.83		4.29	4.29		3	
22/5/2015	14:45	Cloudy	Middle	2.5	24.50	24.50	24.55	8.22	8.22	8.23	31.45	31.45	31.45	69.7	69.9	68.7	4.84	4.87	4.78	3.87	3.87	3.84	3	3.50
	14:47		Middle	2.5	24.60	24.60		8.23	8.23		31.45	31.45		67.5	67.7		4.70	4.72		3.81	3.81		4	
26/5/2015	17:02	Cloudy	Middle	3.0	26.20	26.20	26.25	8.19	8.19	8.20	25.54	25.54	25.54	69.2	69.3	69.3	4.84	4.84	4.84	3.74	3.74	3.74	2	2.50
	17:04		Middle	3.0	26.30	26.30		8.20	8.20		25.54	25.54		69.5	69.2		4.85	4.84		3.74	3.74		3	

Remarks:
Single underline denotes exceedance over Action Level.
Double underline denotes exceedance over Limit Level.



**Water Monitoring Result at P3 - APA
Mid-Ebb Tide**

Date	Time	Weather Condition	Sampling Depth		Water Temperature			pH			Salinity		DO Saturation		DO		Turbidity		Suspended Solids					
					°C			-			ppt		%		mg/L		NTU		mg/L					
					Value	Average		Value	Average		Value	Average	Value	Average	Value	Average	Value	Average	Value	Average				
30/4/2015	11:21	Fine	Middle	2.5	25.50	25.50	25.50	8.03	8.03	8.04	31.38	31.38	31.35	94.0	92.7	93.2	6.42	6.35	6.38	2.15	2.20	2.22	2	2.00
	11:23		Middle	2.5	25.50	25.50		8.04	8.04		31.31	31.31		93.0	92.9		6.37	6.37		2.27	2.25		<2	
2/5/2015	11:04	Fine	Middle	2.5	25.40	25.40	25.50	8.19	8.19	8.20	31.79	31.79	31.79	78.3	76.3	75.9	5.36	5.22	5.19	2.81	2.89	3.03	4	4.00
	11:06		Middle	2.5	25.60	25.60		8.21	8.21		31.79	31.77		75.1	73.8		5.14	5.05		3.26	3.16		4	
4/5/2015	13:48	Fine	Middle	2.5	26.70	26.70	26.75	8.25	8.25	8.26	30.17	30.17	30.13	65.0	63.5	63.3	4.40	4.29	4.28	2.24	2.21	2.16	4	4.50
	13:50		Middle	2.5	26.80	26.80		8.27	8.27		30.08	30.08		62.7	62.0		4.24	4.19		2.15	2.05		5	
6/5/2015	14:39	Sunny	Middle	2.5	26.00	26.00	26.05	8.23	8.23	8.24	30.49	30.49	30.49	61.6	61.5	61.9	4.21	4.20	4.23	1.99	1.98	1.94	2	2.00
	14:41		Middle	2.5	26.10	26.10		8.24	8.24		30.49	30.49		62.0	62.6		4.23	4.28		1.87	1.93		2	
8/5/2015	14:44	Cloudy	Middle	2.5	26.50	26.50	26.55	8.19	8.19	8.20	29.54	29.54	29.54	63.0	66.7	65.9	4.29	4.54	4.49	2.86	2.78	2.78	5	4.50
	14:46		Middle	2.5	26.60	26.60		8.20	8.20		29.53	29.53		67.3	66.7		4.59	4.53		2.74	2.72		4	
11/5/2015	-	Amber Rainstorm	Middle	-	-	-		-	-		-	-		-	-		-	-		-	-		-	
	-		Middle	-	-	-		-	-		-	-		-	-		-	-		-	-		-	
13/5/2015	20:47	Cloudy	Middle	2.5	25.80	25.80	25.80	8.26	8.26	8.27	30.67	30.67	30.67	87.7	88.2	88.5	6.00	6.03	6.06	3.58	3.81	3.44	4	4.00
	20:48		Middle	2.5	25.80	25.80		8.27	8.27		30.67	30.67		88.8	89.3		6.08	6.11		3.21	3.15		4	
15/5/2015	9:36	Fine	Middle	2.5	26.30	26.30	26.35	7.84	7.84	7.85	30.09	30.09	30.09	71.0	70.6	70.3	4.85	4.80	4.79	1.98	1.97	1.98	3	3.50
	9:38		Middle	2.5	26.40	26.40		7.86	7.86		30.08	30.08		69.8	69.9		4.74	4.76		1.97	1.99		4	
18/5/2015	14:40	Cloudy	Middle	2.5	26.60	26.60	26.70	8.21	8.21	8.21	28.45	28.45	28.45	69.0	68.5	68.4	4.71	4.68	4.67	4.82	4.82	4.81	4	3.50
	14:42		Middle	2.5	26.80	26.80		8.21	8.21		28.44	28.44		67.3	68.8		4.59	4.69		4.80	4.81		3	
20/5/2015	14:35	Cloudy	Middle	2.5	26.30	26.30	26.35	8.16	8.16	8.16	27.64	27.64	27.57	66.1	66.2	66.2	4.55	4.56	4.56	5.45	5.39	5.40	5	4.50
	14:37		Middle	2.5	26.40	26.40		8.15	8.15		27.49	27.49		66.4	66.1		4.58	4.56		5.38	5.37		4	
22/5/2015	14:50	Cloudy	Middle	2.5	24.40	24.40	24.40	8.24	8.24	8.24	31.41	31.41	31.41	66.1	67.6	67.0	4.62	4.72	4.68	3.76	3.75	3.75	3	3.50
	14:52		Middle	2.5	24.40	24.40		8.24	8.24		31.41	31.41		67.4	67.0		4.71	4.68		3.75	3.74		4	
26/5/2015	17:08	Cloudy	Middle	3.0	26.10	26.10	26.15	8.21	8.21	8.21	25.50	25.50	25.50	71.5	71.0	71.0	5.02	4.98	4.98	2.82	2.83	2.85	3	3.00
	17:10		Middle	3.0	26.20	26.20		8.21	8.21		25.49	25.49		70.7	70.7		4.96	4.96		2.86	2.87		3	

Remarks:
Single underline denotes exceedance over Action Level.
Double underline denotes exceedance over Limit Level.



**Water Monitoring Result at P4 - SOC
Mid-Ebb Tide**

Date	Time	Weather Condition	Sampling Depth		Water Temperature			pH			Salinity		DO Saturation		DO		Turbidity			Suspended Solids				
					°C			-			ppt		%		mg/L		NTU			mg/L				
					Value	Average		Value	Average		Value	Average	Value	Average	Value	Average	Value	Average	Value	Average	Value	Average		
30/4/2015	11:04	Fine	Middle	2.5	25.30	25.30	25.45	7.96	7.96	7.97	31.37	31.37	31.36	95.0	94.4	93.0	6.52	6.43	6.37	2.36	2.37	2.36	2	2.50
	11:06		Middle	2.5	25.60	25.60		7.98	7.98		31.35	31.35		91.6	91.0		6.28	6.24		2.36	2.33		3	
2/5/2015	11:08	Fine	Middle	2.5	25.30	25.30	25.30	8.22	8.22	8.23	31.72	31.72	31.72	83.4	81.0	81.0	5.72	5.56	5.56	2.47	2.30	2.32	4	4.00
	11:10		Middle	2.5	25.30	25.30		8.23	8.23		31.71	31.71		80.1	79.5		5.49	5.45		2.27	2.25		4	
4/5/2015	13:52	Fine	Middle	2.5	26.50	26.50	26.55	8.28	8.28	8.28	29.93	29.94	29.94	66.4	66.2	66.1	4.51	4.49	4.48	1.82	1.81	1.83	3	3.50
	13:54		Middle	2.5	26.60	26.60		8.29	8.29		29.94	29.94		66.2	65.4		4.48	4.44		1.83	1.85		4	
6/5/2015	14:43	Sunny	Middle	2.5	25.90	25.90	25.90	8.24	8.24	8.24	30.44	30.44	30.44	66.0	64.9	65.0	4.52	4.44	4.45	2.13	2.26	2.21	3	3.00
	14:45		Middle	2.5	25.90	25.90		8.23	8.23		30.44	30.44		64.6	64.3		4.43	4.40		2.28	2.16		3	
8/5/2015	14:48	Cloudy	Middle	2.5	26.50	26.50	26.55	8.20	8.20	8.20	29.49	29.49	29.49	69.8	70.1	69.5	4.75	4.78	4.73	2.75	2.75	2.75	3	2.50
	14:50		Middle	2.5	26.60	26.60		8.20	8.20		29.49	29.49		69.0	69.1		4.70	4.70		2.75	2.75		2	
11/5/2015	-	Amber Rainstorm	Middle	-	-	-		-	-		-	-		-	-		-	-		-	-		-	
	-		Middle	-	-	-		-	-		-	-		-	-		-	-		-	-		-	
13/5/2015	20:53	Cloudy	Middle	2.5	25.80	25.80	25.80	8.25	8.25	8.25	30.60	30.60	30.60	90.9	90.6	91.2	6.23	6.21	6.25	2.31	2.44	2.44	3	2.50
	20:54		Middle	2.5	25.80	25.80		8.26	8.25		30.60	30.61		91.2	91.9		6.25	6.29		2.49	2.51		2	
15/5/2015	9:32	Fine	Middle	2.5	26.30	26.30	26.35	7.99	7.99	7.99	30.18	30.18	30.16	67.6	67.8	67.5	4.60	4.61	4.59	2.57	2.65	2.61	3	3.00
	9:34		Middle	2.5	26.40	26.40		7.98	7.98		30.14	30.14		67.6	66.9		4.60	4.55		2.63	2.58		3	
18/5/2015	14:45	Cloudy	Middle	2.5	26.50	26.50	26.50	8.21	8.21	8.21	28.27	28.27	28.28	69.3	69.5	69.3	4.75	4.76	4.75	4.65	4.67	4.74	4	4.00
	14:47		Middle	2.5	26.50	26.50		8.20	8.20		28.29	28.29		69.4	69.0		4.75	4.73		4.81	4.82		4	
20/5/2015	14:40	Cloudy	Middle	2.5	26.30	26.30	26.35	8.16	8.16	8.16	26.86	26.86	26.86	68.6	69.1	68.7	4.75	4.79	4.75	3.99	4.00	3.90	3	4.00
	14:42		Middle	2.5	26.40	26.40		8.16	8.16		26.86	26.86		68.2	68.7		4.73	4.74		3.81	3.81		5	
22/5/2015	14:55	Cloudy	Middle	2.5	24.40	24.40	24.40	8.24	8.24	8.24	31.33	31.33	31.33	68.0	67.4	68.0	4.76	4.71	4.75	3.83	3.78	3.78	3	4.00
	14:57		Middle	2.5	24.40	24.40		8.24	8.24		31.33	31.33		68.2	68.3		4.77	4.77		3.76	3.75		5	
26/5/2015	17:14	Cloudy	Middle	3.0	26.20	26.20	26.20	8.21	8.21	8.21	25.56	25.56	25.56	70.1	71.0	71.1	4.91	4.96	4.98	3.17	3.18	3.17	<2	<2
	17:16		Middle	3.0	26.20	26.20		8.21	8.21		25.56	25.56		72.3	71.1		5.06	4.98		3.16	3.15		<2	

Remarks:
Single underline denotes exceedance over Action Level.
Double underline denotes exceedance over Limit Level.



**Water Monitoring Result at P5 - WCT / RT / IT
Mid-Ebb Tide**

Date	Time	Weather Condition	Sampling Depth		Water Temperature			pH			Salinity		DO Saturation		DO		Turbidity		Suspended Solids					
					°C			-			ppt		%		mg/L		NTU		mg/L					
					Value	Average		Value	Average		Value	Average	Value	Average	Value	Average	Value	Average	Value	Average				
30/4/2015	11:00	Fine	Middle	2.5	25.80	25.80	25.95	7.83	7.83	7.85	31.57	31.57	31.44	90.7	91.5	93.3	6.18	6.25	6.36	1.97	1.99	2.06	4	3.50
	11:02		Middle	2.5	26.10	26.10		7.87	7.87		31.30	31.30		95.6	95.3		6.51	6.49		2.14	2.15		3	
2/5/2015	11:12	Fine	Middle	2.5	25.40	25.40	25.40	8.24	8.24	8.24	31.77	31.77	31.77	81.3	79.1	78.4	5.57	5.42	5.37	2.79	2.76	2.83	2	3.00
	11:14		Middle	2.5	25.40	25.40		8.24	8.24		31.77	31.77		77.3	75.7		5.30	5.19		2.85	2.90		4	
4/5/2015	13:56	Fine	Middle	2.5	26.50	26.50	26.55	8.29	8.29	8.29	30.05	30.05	30.05	60.8	63.3	62.5	4.13	4.29	4.24	2.64	2.71	2.70	3	4.00
	13:58		Middle	2.5	26.60	26.60		8.29	8.29		30.05	30.05		62.9	63.0		4.27	4.27		2.72	2.72		5	
6/5/2015	14:47	Sunny	Middle	2.5	25.80	25.80	25.85	8.24	8.24	8.24	30.39	30.39	30.38	63.0	63.2	62.6	4.32	4.34	4.29	2.57	2.60	2.61	3	3.00
	14:49		Middle	2.5	25.90	25.90		8.24	8.24		30.37	30.37		63.0	61.2		4.32	4.19		2.64	2.63		3	
8/5/2015	14:52	Cloudy	Middle	2.5	26.30	26.30	26.35	8.20	8.20	8.20	29.35	29.35	29.41	66.0	65.4	64.4	4.48	4.46	4.39	3.18	3.16	3.14	4	4.00
	14:54		Middle	2.5	26.40	26.40		8.20	8.20		29.46	29.46		63.4	62.8		4.33	4.29		3.15	3.05		4	
11/5/2015	-	Amber Rainstorm	Middle	-	-	-		-	-		-	-		-	-		-	-		-	-		-	
	-		Middle	-	-	-		-	-		-	-		-	-		-	-		-	-		-	
13/5/2015	20:59	Cloudy	Middle	2.5	25.80	25.80	25.80	8.23	8.23	8.23	30.68	30.68	30.68	83.2	84.9	84.6	5.70	5.81	5.80	3.53	3.51	3.60	4	4.00
	21:00		Middle	2.5	25.80	25.80		8.23	8.23		30.68	30.68		85.6	84.8		5.86	5.81		3.70	3.67		4	
15/5/2015	9:24	Fine	Middle	2.5	26.30	26.30	26.30	7.96	7.96	7.96	30.28	30.28	30.28	72.0	71.0	69.8	4.90	4.83	4.74	5.09	5.06	4.98	4	4.50
	9:26		Middle	2.5	26.30	26.30		7.96	7.96		30.27	30.27		69.0	67.0		4.69	4.55		4.89	4.86		5	
18/5/2015	14:50	Cloudy	Middle	2.5	26.40	26.40	26.45	8.20	8.20	8.21	28.31	28.31	28.34	68.7	68.8	68.5	4.72	4.72	4.71	5.34	5.32	5.28	4	4.50
	14:52		Middle	2.5	26.50	26.50		8.21	8.21		28.36	28.36		67.7	68.7		4.67	4.71		5.22	5.22		5	
20/5/2015	14:45	Cloudy	Middle	2.5	26.30	26.30	26.35	8.16	8.16	8.16	26.91	26.91	26.92	68.2	68.7	68.3	4.73	4.76	4.71	5.00	4.84	4.84	3	2.50
	14:47		Middle	2.5	26.40	26.40		8.16	8.16		26.92	26.92		69.7	66.5		4.83	4.51		4.82	4.70		2	
22/5/2015	15:00	Cloudy	Middle	2.5	24.30	24.30	24.30	8.24	8.24	8.24	31.32	31.32	31.34	69.8	69.9	69.9	4.88	4.88	4.89	3.77	3.86	3.90	4	4.00
	15:02		Middle	2.5	24.30	24.30		8.24	8.24		31.35	31.35		70.1	69.9		4.90	4.89		3.96	3.99		4	
26/5/2015	17:20	Cloudy	Middle	3.0	26.10	26.10	26.15	8.21	8.21	8.21	25.85	25.85	25.85	67.3	70.1	68.7	4.71	4.90	4.81	3.13	3.13	3.09	3	3.50
	17:22		Middle	3.0	26.20	26.20		8.20	8.20		25.85	25.85		69.8	67.7		4.89	4.73		3.05	3.03		4	

Remarks:
Single underline denotes exceedance over Action Level.
Double underline denotes exceedance over Limit Level.



**Water Monitoring Result at RW21-P789 - Sun Hung Kai Centre
Mid-Ebb Tide**

Date	Time	Weather Condition	Sampling Depth		Water Temperature			pH			Salinity		DO Saturation		DO		Turbidity		Suspended Solids					
					°C			-			ppt		%		mg/L		NTU		mg/L					
					Value	Average		Value	Average		Value	Average	Value	Average	Value	Average	Value	Average	Value	Average				
30/4/2015	8:40	Fine	Middle	3.0	24.90	24.90	24.95	8.02	8.02	8.04	32.14	32.14	32.18	77.0	74.8	75.1	5.30	5.16	5.17	1.51	1.51	1.52	3	3.50
	8:42		Middle	3.0	25.00	25.00		8.05	8.05		32.22	32.22		74.3	74.1		5.12	5.10		1.52	1.53		4	
2/5/2015	11:35	Fine	Middle	3.5	25.30	25.30	25.35	8.25	8.25	8.25	32.23	32.14	32.33	75.3	75.4	74.3	5.16	5.16	5.09	1.71	1.58	1.58	5	6.00
	11:37		Middle	3.5	25.40	25.40		8.24	8.24		32.47	32.47		74.0	72.6		5.08	4.97		1.51	1.51		7	
4/5/2015	9:40	Fine	Middle	3.5	25.90	25.90	26.00	8.37	8.37	8.38	31.61	31.61	31.61	75.2	75.9	75.4	5.10	5.13	5.11	1.64	1.63	1.60	3	3.00
	9:42		Middle	3.5	26.10	26.10		8.38	8.38		31.61	31.61		74.5	75.8		5.06	5.13		1.58	1.55		3	
6/5/2015	13:11	Sunny	Middle	3.5	26.30	26.30	26.50	8.28	8.28	8.25	31.59	31.59	31.50	65.1	63.2	62.6	4.39	4.26	4.22	2.64	2.37	2.50	2	2.00
	13:13		Middle	3.5	26.70	26.70		8.22	8.22		31.40	31.40		61.5	60.7		4.14	4.09		2.37	2.63		2	
8/5/2015	15:19	Cloudy	Middle	3.5	26.40	26.40	26.45	8.18	8.18	8.19	30.09	30.09	30.08	60.1	60.1	60.0	4.08	4.08	4.07	3.02	3.02	3.05	3	3.50
	15:21		Middle	3.5	26.50	26.50		8.19	8.19		30.07	30.07		59.5	60.1		4.04	4.08		3.03	3.14		4	
11/5/2015	-	Amber Rainstorm	Middle	-	-	-		-	-		-	-		-	-		-	-		-	-		-	
	-		Middle	-	-	-		-	-		-	-		-	-		-	-		-	-		-	
13/5/2015	18:42	Cloudy	Middle	3.5	25.90	25.90	25.90	7.97	7.97	7.98	31.06	31.06	31.05	83.5	86.5	85.0	5.69	5.87	5.78	3.00	3.06	3.00	3	2.50
	18:43		Middle	3.5	25.90	25.90		8.00	7.99		31.04	31.04		85.1	84.7		5.80	5.77		2.98	2.96		2	
15/5/2015	9:40	Fine	Middle	3.0	26.40	26.40	26.50	8.24	8.24	8.23	30.76	30.76	30.78	62.2	63.6	63.1	4.20	4.29	4.26	5.31	5.29	5.30	8	8.00
	9:42		Middle	3.0	26.60	26.60		8.22	8.22		30.79	30.79		63.1	63.3		4.26	4.27		5.29	5.32		8	
18/5/2015	11:05	Cloudy	Middle	3.0	26.70	26.70	26.80	8.11	8.11	8.12	30.05	30.05	30.07	63.0	62.6	63.2	4.23	4.20	4.35	3.75	3.75	3.82	6	5.00
	11:07		Middle	3.0	26.90	26.90		8.12	8.12		30.08	30.08		63.4	63.7		4.26	4.70		3.85	3.93		4	
20/5/2015	13:40	Cloudy	Middle	3.0	26.40	26.40	26.50	8.16	8.16	8.16	27.52	27.52	27.52	66.4	67.5	67.5	4.57	4.65	4.65	5.97	5.99	5.91	6	6.00
	13:42		Middle	3.0	26.60	26.60		8.16	8.16		27.52	27.52		68.4	67.6		4.71	4.65		5.92	5.76		6	
22/5/2015	15:22	Cloudy	Middle	3.5	24.30	24.30	24.30	8.22	8.22	8.23	31.86	31.86	31.87	58.1	57.4	56.9	4.06	4.01	3.98	3.37	3.35	3.34	4	4.00
	15:24		Middle	3.5	24.30	24.30		8.24	8.24		31.88	31.88		56.6	55.6		3.95	3.88		3.32	3.30		4	
26/5/2015	17:50	Cloudy	Middle	3.0	26.50	26.50	26.50	8.15	8.15	8.15	26.72	26.72	26.73	62.6	62.8	63.0	4.34	4.35	4.36	3.20	3.23	3.20	3	3.00
	17:52		Middle	3.0	26.50	26.50		8.14	8.14		26.73	26.73		63.3	63.2		4.37	4.36		3.22	3.14		3	

Remarks:
Single underline denotes exceedance over Action Level.
Double underline denotes exceedance over Limit Level.



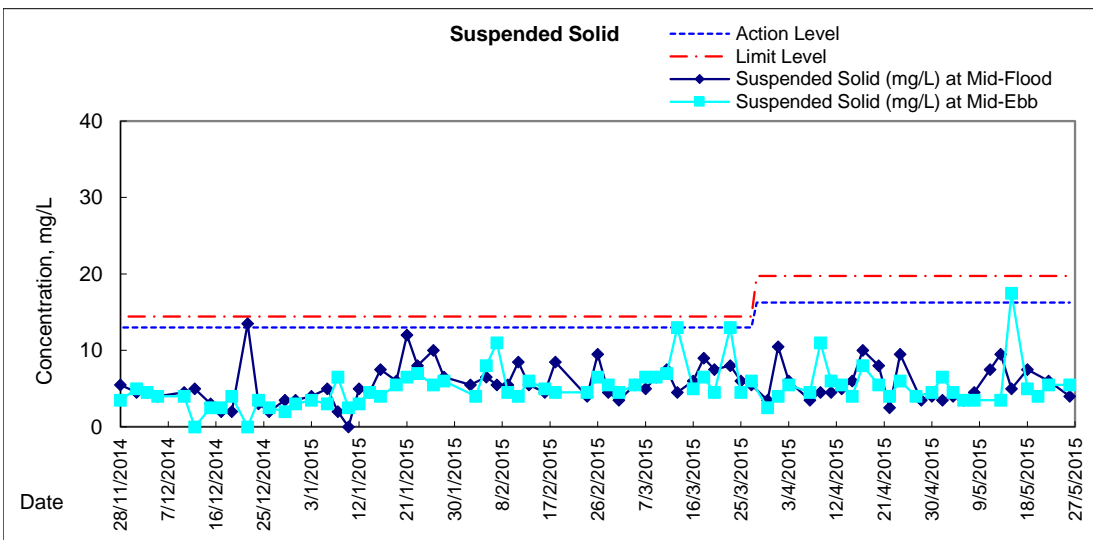
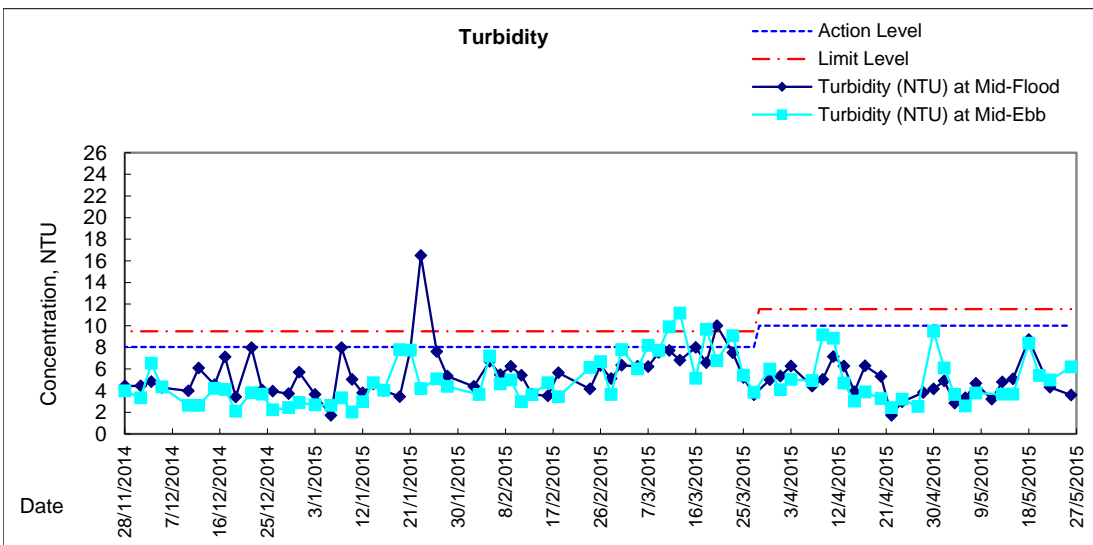
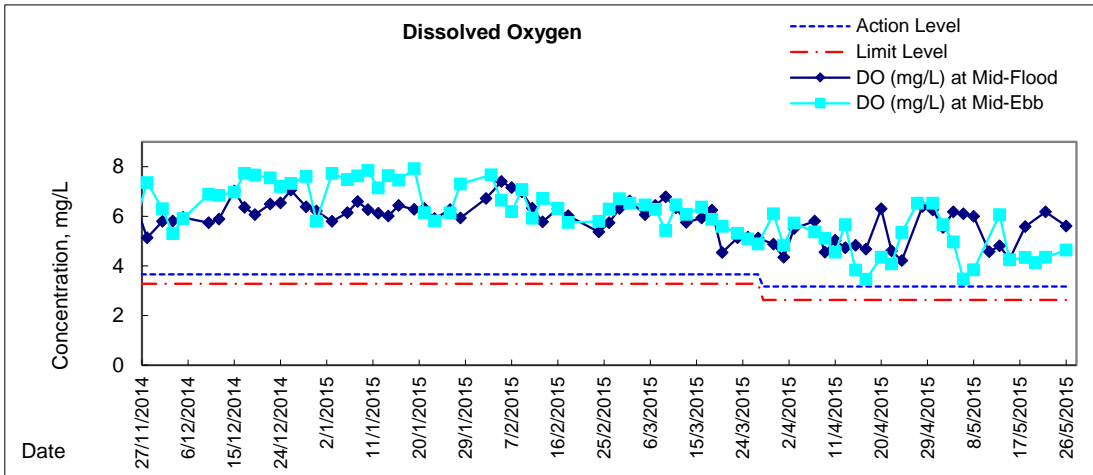
**Water Monitoring Result at WSD19 - Sheung Wan
Mid-Ebb Tide**

Date	Time	Weather Condition	Sampling Depth		Water Temperature			pH			Salinity		DO Saturation		DO		Turbidity		Suspended Solids					
					°C			-			ppt		%		mg/L		NTU		mg/L					
					Value	Average		Value	Average		Value	Average	Value	Average	Value	Average	Value	Average	Value	Average				
30/4/2015	11:50	Fine	Middle	2.5	27.10	27.10	27.30	8.10	8.10	8.10	31.64	31.64	31.64	97.9	98.8	98.3	6.49	6.59	6.52	9.39	9.36	9.50	4	4.50
	11:52		Middle	2.5	27.50	27.50		8.10	8.10		31.64	31.64		98.1	98.4		6.49	6.51		9.68	9.57		5	
2/5/2015	10:25	Fine	Middle	3.0	25.60	25.60	25.70	7.98	7.98	8.01	32.30	32.30	32.27	82.0	83.0	83.2	5.58	5.65	5.66	6.21	6.00	6.09	6	6.50
	10:27		Middle	3.0	25.80	25.80		8.03	8.03		32.23	32.23		83.1	84.8		5.65	5.77		6.01	6.12		7	
4/5/2015	10:45	Fine	Middle	3.5	26.10	26.10	26.20	8.17	8.17	8.18	30.44	30.44	30.44	74.4	73.6	73.0	5.06	5.01	4.97	3.66	3.54	3.63	5	4.50
	10:47		Middle	3.5	26.30	26.30		8.18	8.18		30.44	30.44		72.6	71.5		4.93	4.86		3.65	3.68		4	
6/5/2015	14:01	Sunny	Middle	3.5	26.30	26.30	26.30	8.15	8.15	8.16	30.13	30.13	30.10	51.8	51.3	51.0	3.53	3.50	3.47	2.64	2.67	2.59	4	3.50
	14:03		Middle	3.5	26.30	26.30		8.16	8.16		30.07	30.07		50.7	50.0		3.45	3.40		2.54	2.50		3	
8/5/2015	14:00	Cloudy	Middle	3.5	27.30	27.30	27.35	8.14	8.14	8.15	29.07	29.07	29.09	60.0	57.0	57.1	4.03	3.83	3.84	3.77	3.75	3.76	3	3.50
	14:02		Middle	3.5	27.40	27.40		8.15	8.15		29.10	29.10		56.3	55.2		3.79	3.70		3.75	3.75		4	
11/5/2015	-	Amber Rainstorm	Middle	-	-	-		-	-		-	-		-	-		-	-		-	-		-	
	-		Middle	-	-	-		-	-		-	-		-	-		-	-		-	-		-	
13/5/2015	19:30	Cloudy	Middle	3.5	25.70	25.70	25.70	8.04	8.04	8.06	30.60	30.59	30.59	86.6	89.9	88.4	5.94	6.16	6.07	3.92	3.65	3.68	4	3.50
	19:31		Middle	3.5	25.70	25.70		8.08	8.08		30.59	30.59		89.3	87.9		6.13	6.03		3.60	3.54		3	
15/5/2015	10:50	Fine	Middle	3.0	26.80	26.80	26.85	8.19	8.19	8.20	29.33	29.33	29.35	62.1	62.4	62.7	4.20	4.23	4.25	3.78	3.64	3.68	18	17.50
	10:52		Middle	3.0	26.90	26.90		8.20	8.20		29.36	29.36		63.4	62.9		4.29	4.26		3.64	3.64		17	
18/5/2015	13:30	Cloudy	Middle	3.0	26.90	26.90	27.05	8.19	8.19	8.19	28.39	28.39	28.39	63.9	63.8	64.1	4.32	4.31	4.34	8.38	8.33	8.38	5	5.00
	13:32		Middle	3.0	27.20	27.20		8.19	8.19		28.39	28.39		64.3	64.5		4.36	4.37		8.44	8.35		5	
20/5/2015	13:05	Cloudy	Middle	3.0	26.90	26.90	26.90	8.09	8.09	8.09	27.10	27.10	27.12	61.5	61.1	60.4	4.21	4.17	4.13	5.63	5.41	5.39	4	4.00
	13:07		Middle	3.0	26.90	26.90		8.08	8.08		27.13	27.13		59.2	59.9		4.05	4.09		5.37	5.14		4	
22/5/2015	14:15	Cloudy	Middle	3.5	24.50	24.50	24.60	8.15	8.15	8.15	31.20	31.20	31.21	62.4	62.7	62.5	4.34	4.36	4.35	5.00	5.00	4.99	5	5.50
	14:17		Middle	3.5	24.70	24.70		8.15	8.15		31.21	31.21		62.8	62.2		4.37	4.33		4.96	4.99		6	
26/5/2015	16:10	Cloudy	Middle	3.0	26.10	26.10	26.15	8.12	8.12	8.13	25.80	25.80	25.80	67.9	67.2	66.3	4.75	4.70	4.64	6.30	6.16	6.18	5	5.50
	16:12		Middle	3.0	26.20	26.20		8.13	8.13		25.80	25.80		66.2	64.0		4.63	4.48		6.13	6.12		6	

Remarks:
Single underline denotes exceedance over Action Level.
Double underline denotes exceedance over Limit Level.

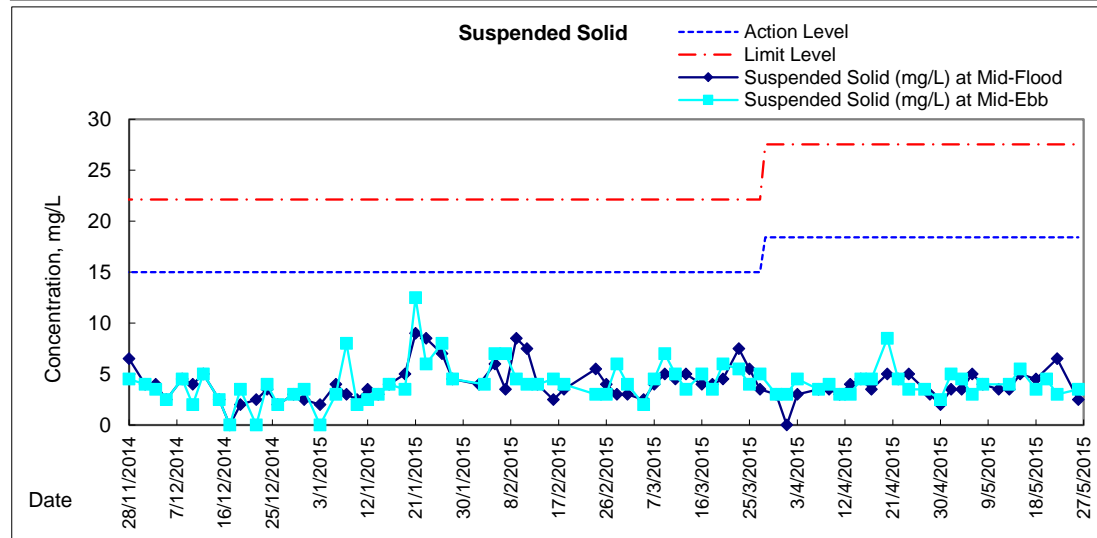
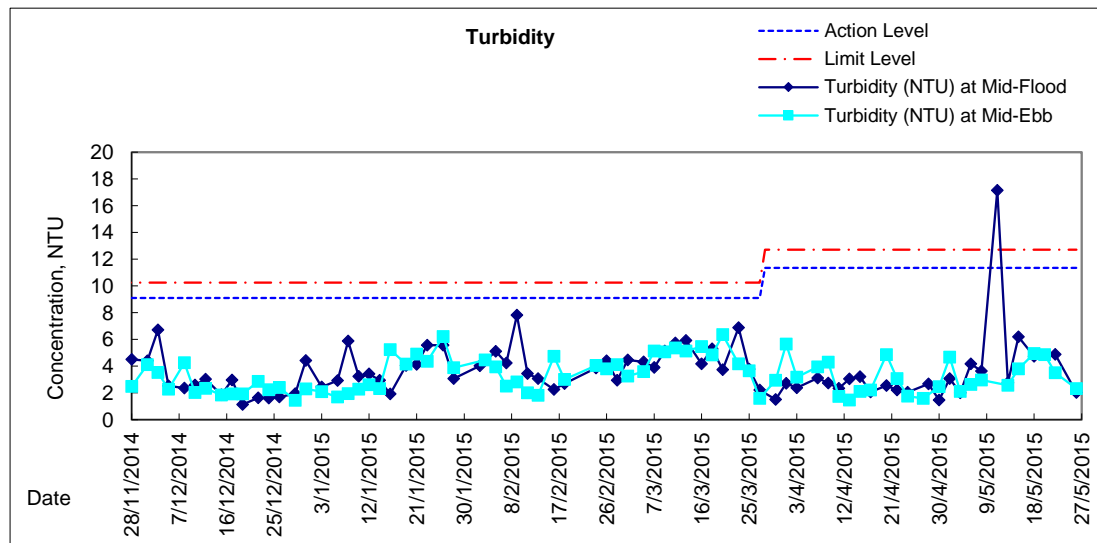
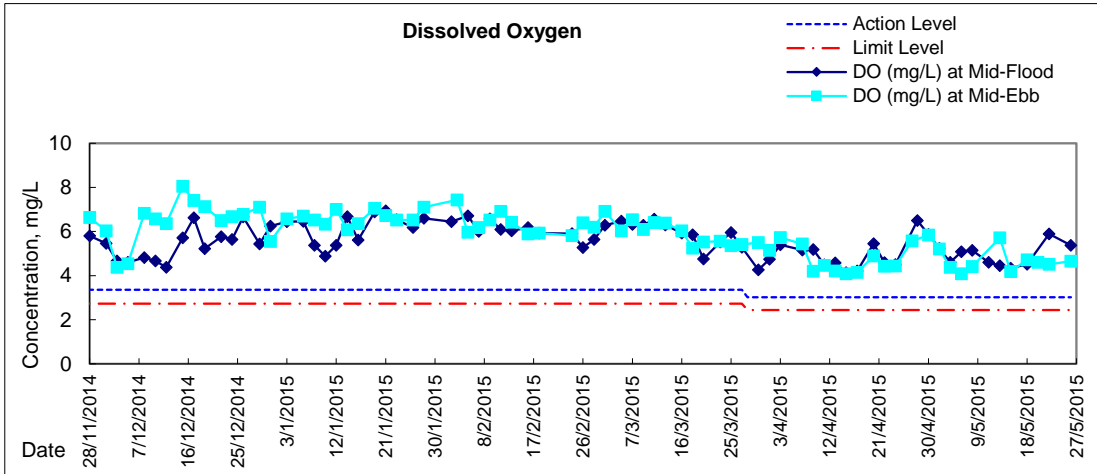


Graphic Presentation of Water Quality Result of WSD19 - Sheung Wan



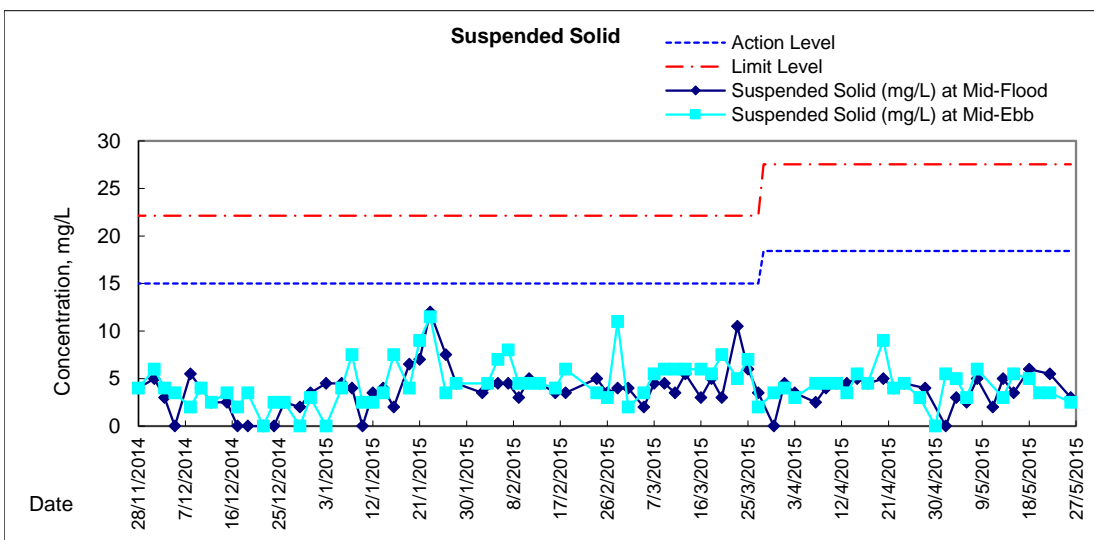
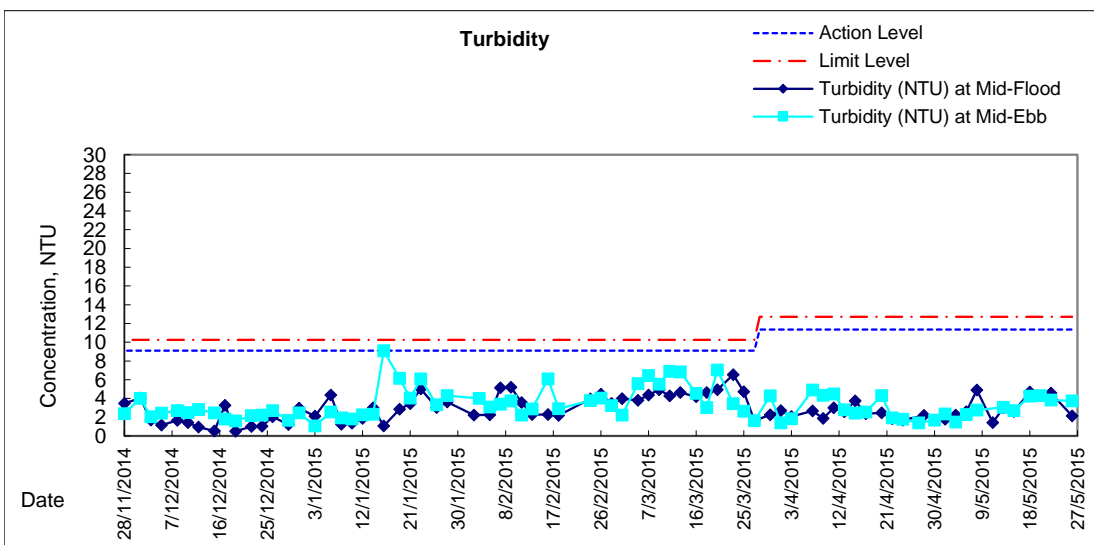
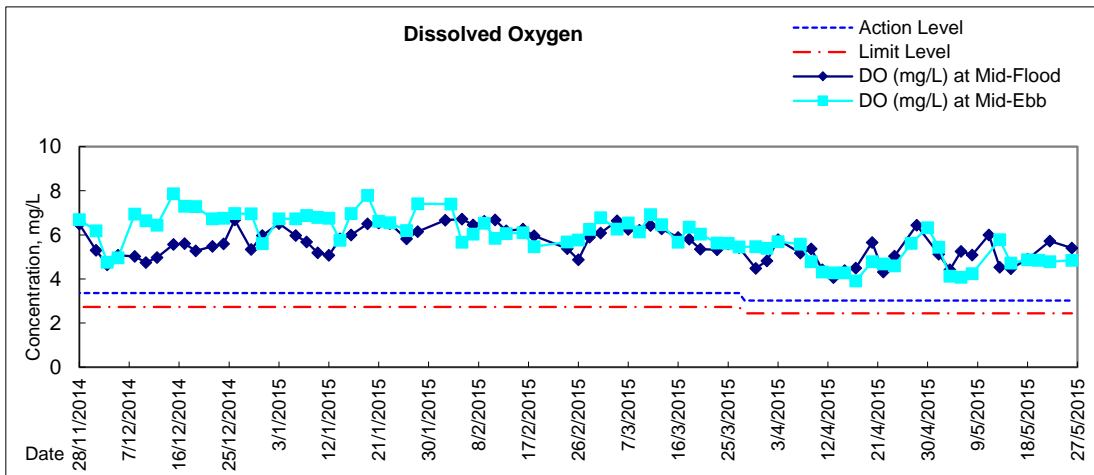


Graphic Presentation of Water Quality Result of C1 - HKCEC



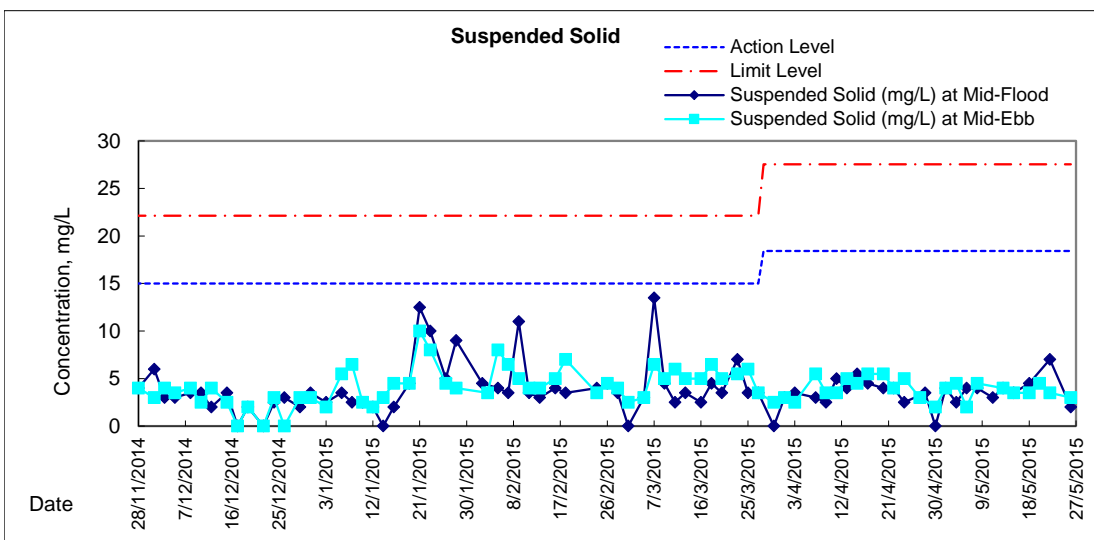
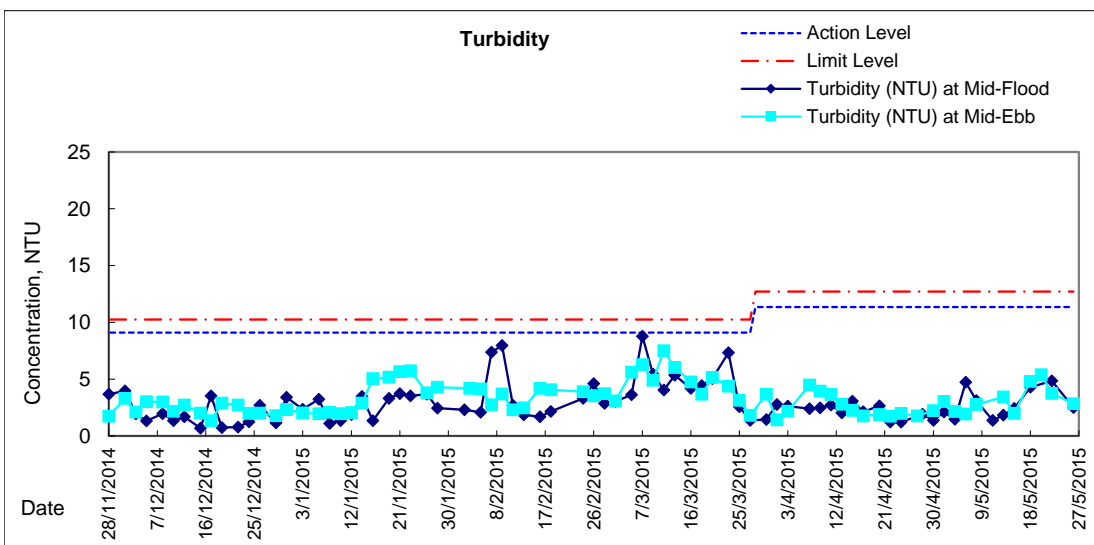
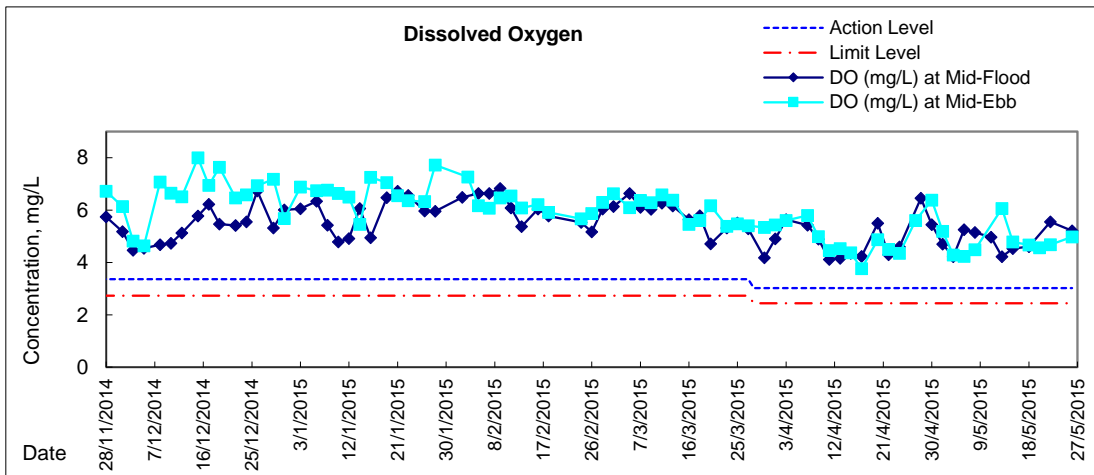


Graphic Presentation of Water Quality Result of P1 - HKCEC Phase I



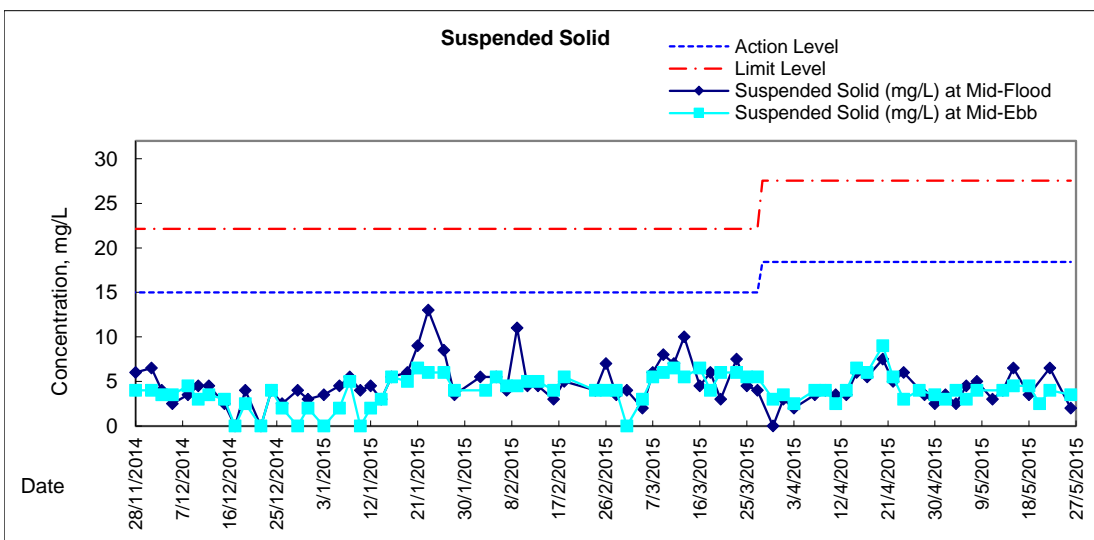
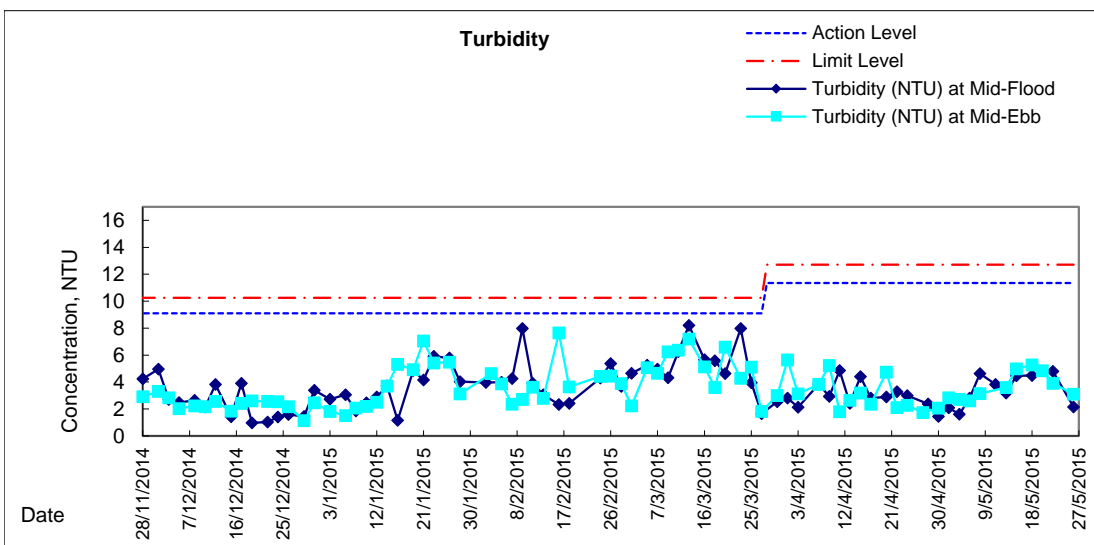
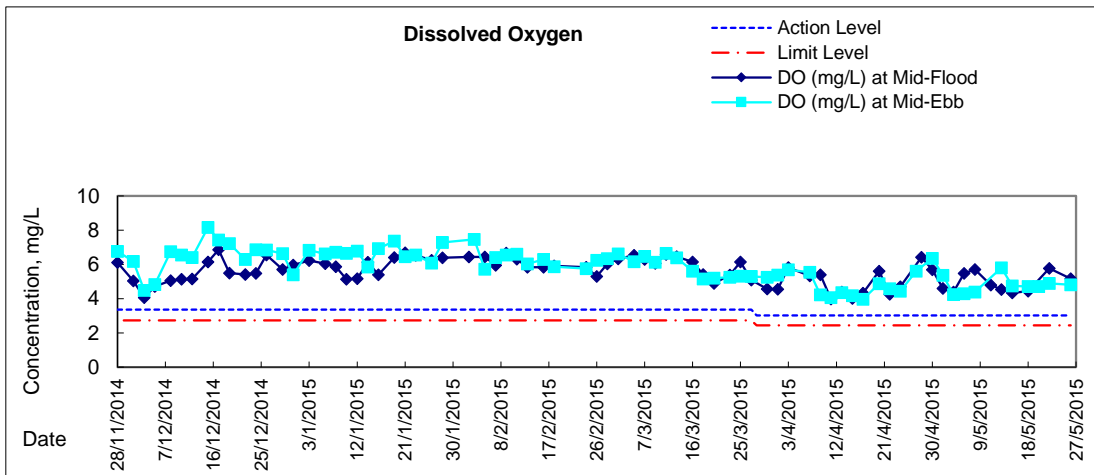


Graphic Presentation of Water Quality Result of P3 - APA



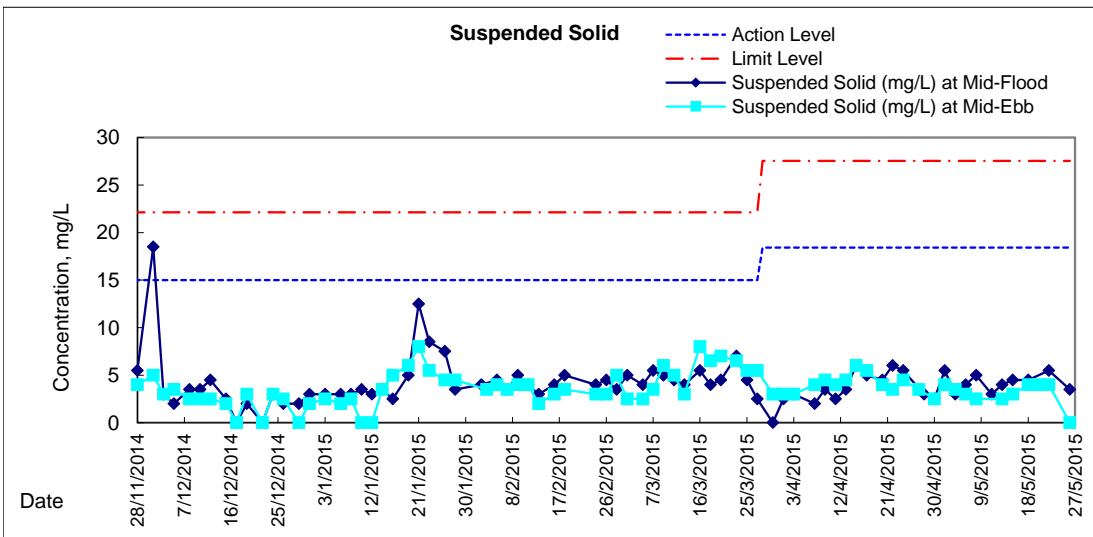
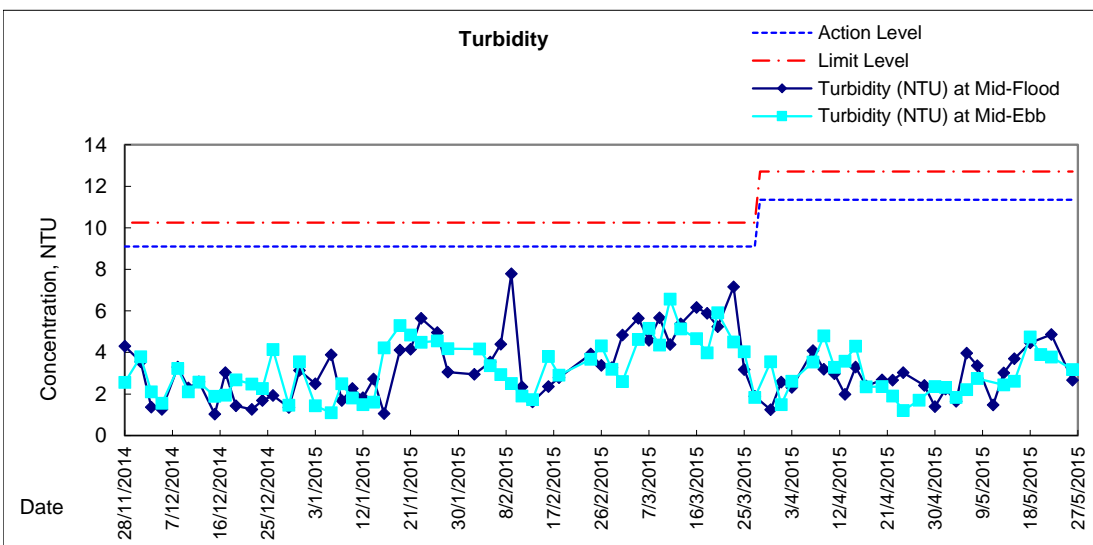
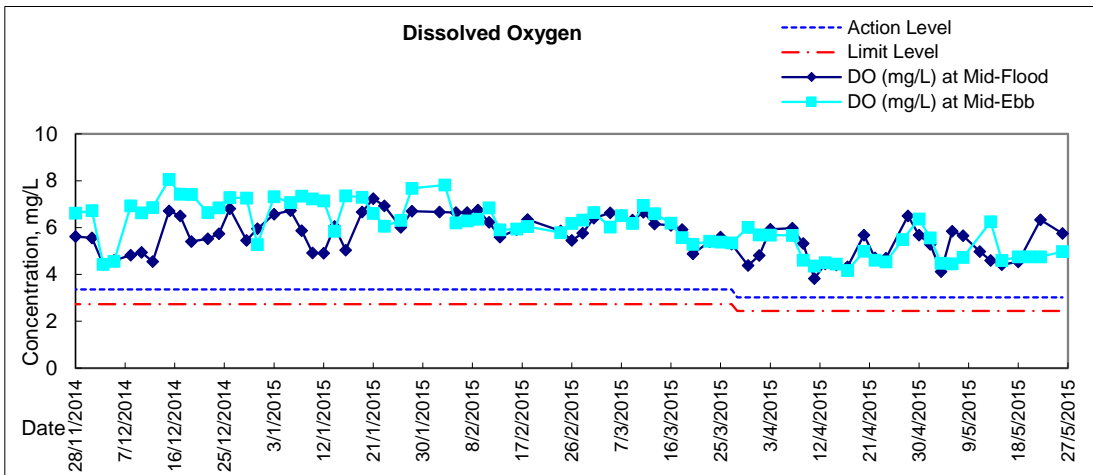


Graphic Presentation of Water Quality Result of P5 - WCT / RT / IT



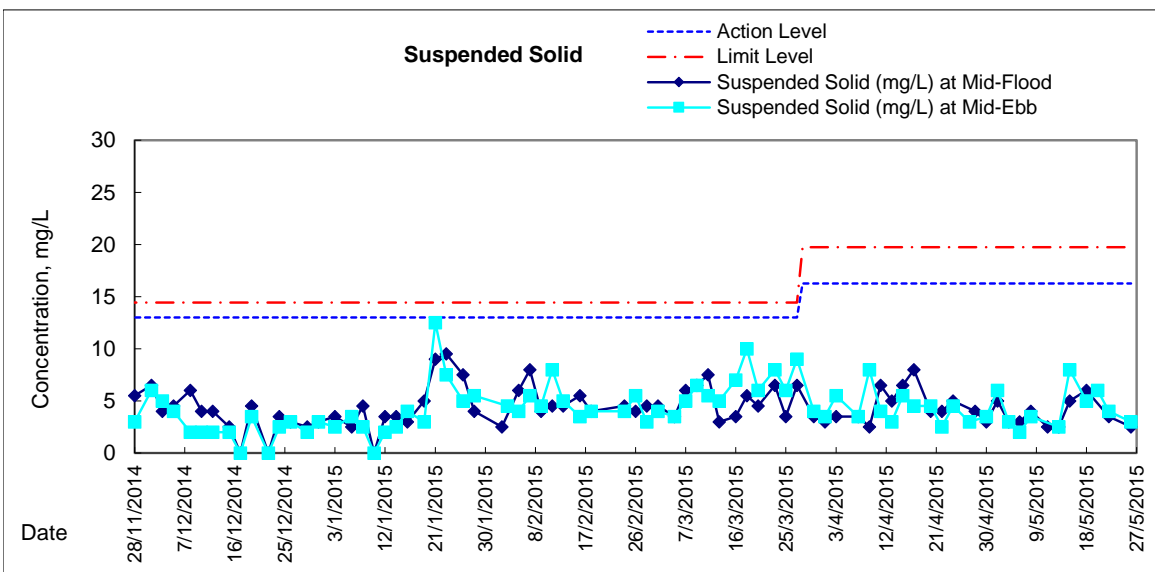
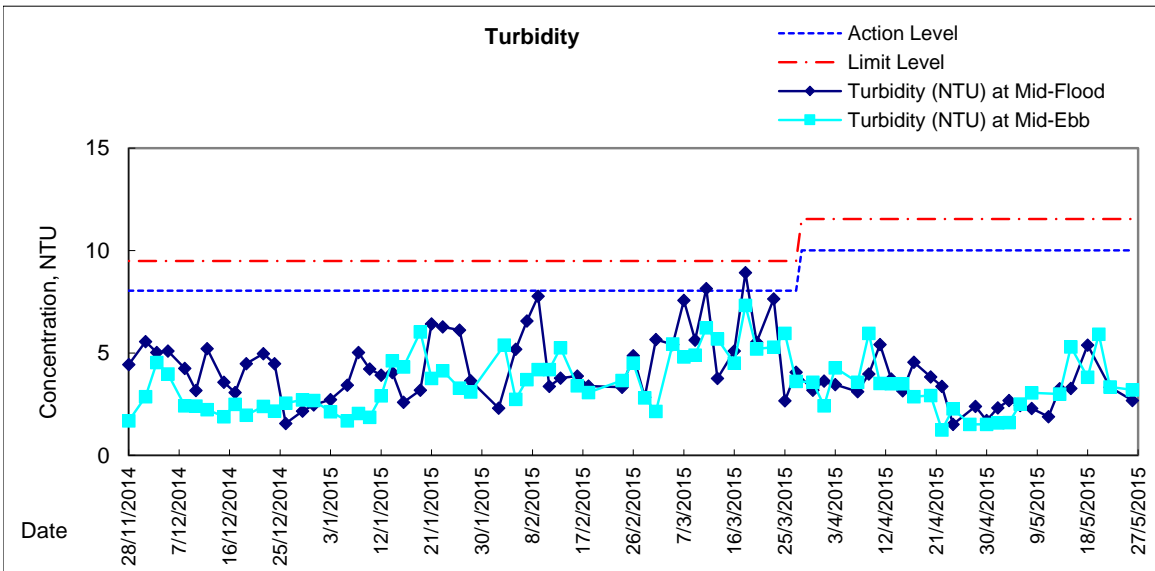
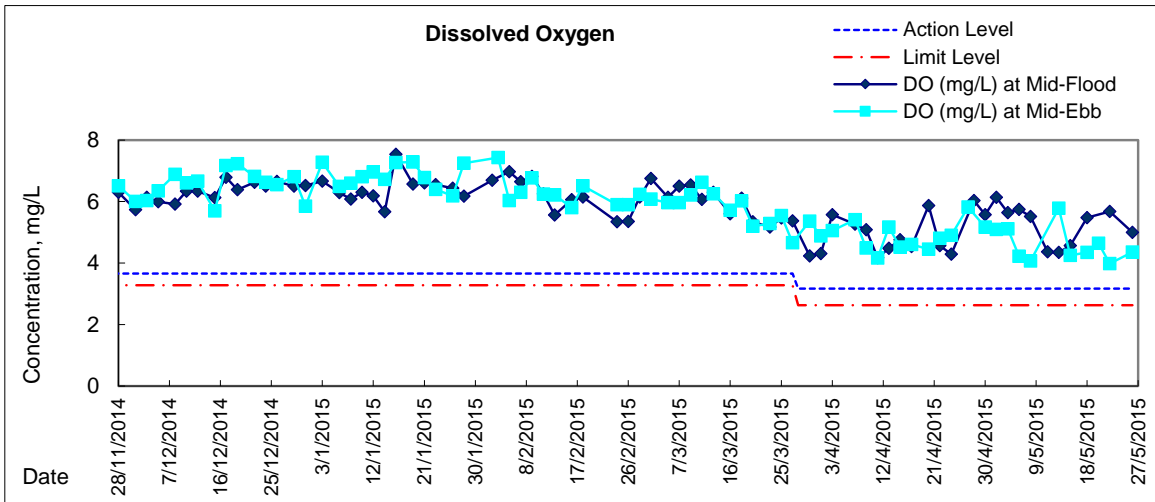


Graphic Presentation of Water Quality Result of P4 - SOC



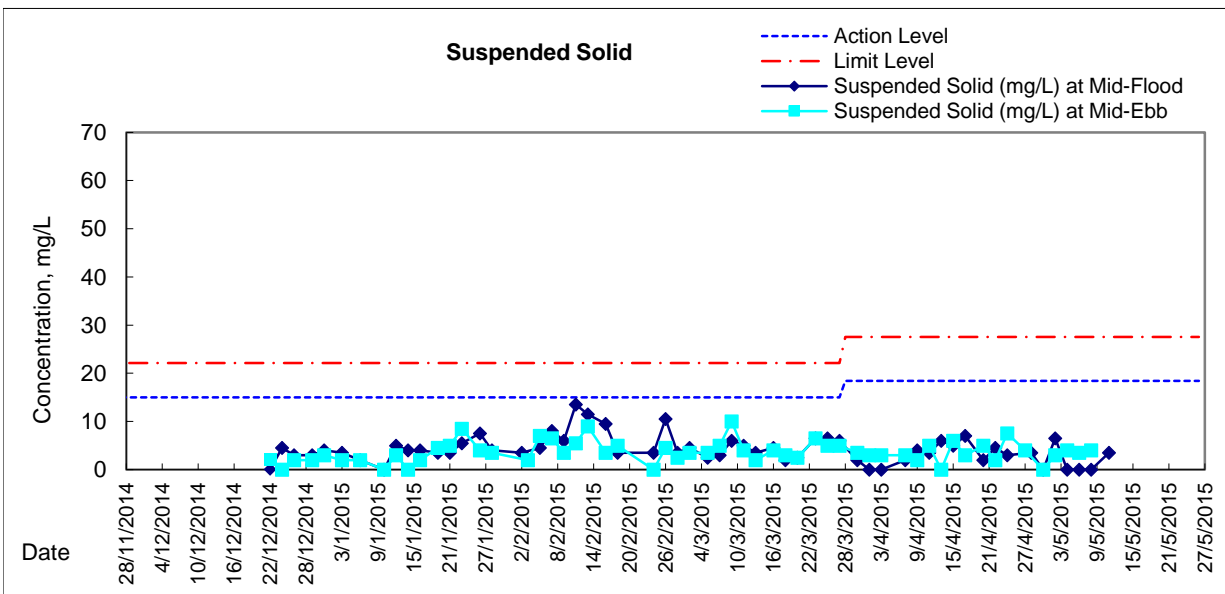
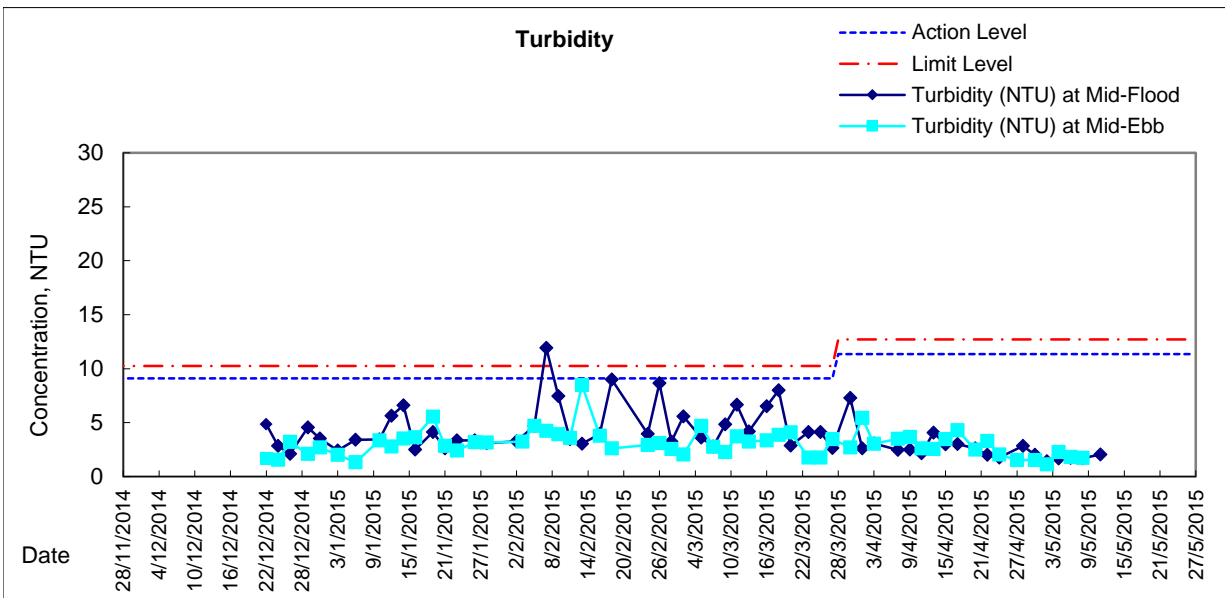
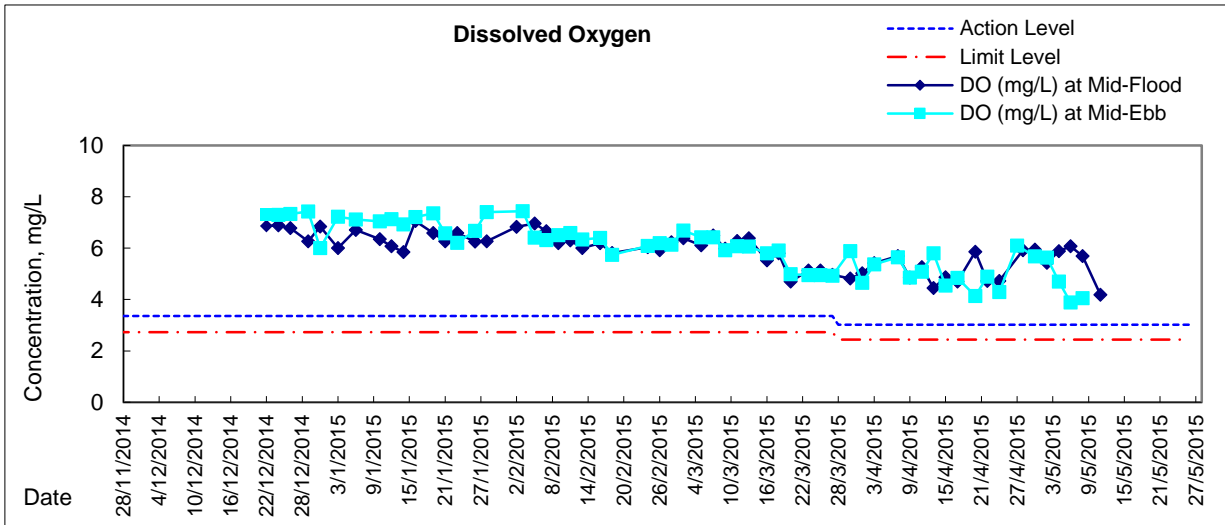


Graphic Presentation of Water Quality Result of RW21-P789 - GEC/CRC/SHK





Graphic Presentation of Water Quality Result of C7 - Windsor House





**Water Monitoring Result at C6 - Excelsior Hotel
Mid-Flood Tide**

Date	Time	Weater Condition	Sampling Depth		Water Temperature			pH			Salinity		DO Saturation		DO				
					°C			-			ppt		%		mg/L				
			m	Value	Average	Value	Average	Value	Average	Value	Average	Value	Average	Value	Average				
30/4/2015	-	Fine	Surface	-	-	-	-	-	-	-	-	-	-	-	-	-	-	-	
	16:45		Middle	1.5	26.50	26.50	26.5	8.21	8.21	8.2	25.89	25.89	25.9	87.0	86.8	86.9	5.93	5.84	5.89
	-		Bottom	-	-	-	-	-	-	-	-	-	-	-	-	-	-	-	-
2/5/2015	-	Sunny	Surface	-	-	-	-	-	-	-	-	-	-	-	-	-	-	-	-
	15:40		Middle	1.5	26.10	26.10	26.1	8.05	8.05	8.1	30.71	30.71	30.7	78.0	76.9	77.5	5.38	5.23	5.31
	-		Bottom	-	-	-	-	-	-	-	-	-	-	-	-	-	-	-	-
4/5/2015	-	Cloudy	Surface	-	-	-	-	-	-	-	-	-	-	-	-	-	-	-	-
	19:53		Middle	1.5	26.40	26.40	26.4	7.95	7.95	8.0	29.01	29.01	29.0	76.2	76.9	76.6	5.21	5.27	5.24
	-		Bottom	-	-	-	-	-	-	-	-	-	-	-	-	-	-	-	-
6/5/2015	-	Cloudy	Surface	-	-	-	-	-	-	-	-	-	-	-	-	-	-	-	-
	19:35		Middle	1.0	26.40	26.40	26.4	8.07	8.07	8.1	30.00	30.00	30.0	65.5	65.9	65.7	4.45	4.48	4.47
	-		Bottom	-	-	-	-	-	-	-	-	-	-	-	-	-	-	-	-
8/5/2015	-	Cloudy	Surface	-	-	-	-	-	-	-	-	-	-	-	-	-	-	-	-
	21:28		Middle	1.0	26.90	26.90	26.9	7.97	7.97	8.0	28.95	28.95	29.0	71.1	71.5	71.3	4.82	4.85	4.84
	-		Bottom	-	-	-	-	-	-	-	-	-	-	-	-	-	-	-	-
11/5/2015	-	Fine	Surface	-	-	-	-	-	-	-	-	-	-	-	-	-	-	-	-
	10:35		Middle	1.5	26.60	26.60	26.6	8.10	8.10	8.1	29.20	29.20	29.2	56.8	57.7	57.3	3.86	3.92	3.89
	-		Bottom	-	-	-	-	-	-	-	-	-	-	-	-	-	-	-	-
13/5/2015	-	Fine	Surface	-	-	-	-	-	-	-	-	-	-	-	-	-	-	-	-
	16:05		Middle	1.5	25.90	25.90	25.9	8.19	8.19	8.2	29.99	29.99	30.0	54.7	56.9	55.8	3.75	3.90	3.83
	-		Bottom	-	-	-	-	-	-	-	-	-	-	-	-	-	-	-	-
15/5/2015	-	Fine	Surface	-	-	-	-	-	-	-	-	-	-	-	-	-	-	-	-
	16:45		Middle	1.5	26.50	26.50	26.5	8.13	8.13	8.1	29.70	29.70	29.7	55.7	55.6	55.7	3.79	3.78	3.79
	-		Bottom	-	-	-	-	-	-	-	-	-	-	-	-	-	-	-	-
18/5/2015	-	Cloudy	Surface	-	-	-	-	-	-	-	-	-	-	-	-	-	-	-	-
	17:38		Middle	1.0	26.70	26.70	26.7	8.00	8.00	8.0	27.56	27.56	27.6	64.6	65.2	64.9	4.43	4.47	4.45
	-		Bottom	-	-	-	-	-	-	-	-	-	-	-	-	-	-	-	-
20/5/2015	-	Amber Rainstorm	Surface	-	-	-	-	-	-	-	-	-	-	-	-	-	-	-	-
	-		Middle	-	-	-	-	-	-	-	-	-	-	-	-	-	-	-	-
	-		Bottom	-	-	-	-	-	-	-	-	-	-	-	-	-	-	-	-
22/5/2015	-	Cloudy	Surface	-	-	-	-	-	-	-	-	-	-	-	-	-	-	-	-
	20:51		Middle	1.0	24.10	24.10	24.1	7.68	7.68	7.7	28.50	28.50	28.5	68.3	69.4	68.9	4.88	4.95	4.92
	-		Bottom	-	-	-	-	-	-	-	-	-	-	-	-	-	-	-	-
26/5/2015	-	Cloudy	Surface	-	-	-	-	-	-	-	-	-	-	-	-	-	-	-	-
	0:55		Middle	1.0	26.90	26.90	26.9	8.19	8.18	8.2	22.16	22.16	22.2	70.8	71.1	71.0	5.06	5.08	5.07
	-		Bottom	-	-	-	-	-	-	-	-	-	-	-	-	-	-	-	-

Remarks:
Single underline denotes exceedance over Action Level.
Double underline denotes exceedance over Limit Level.



**Water Monitoring Result at Ex-WPCWA SW - South-western corners of ex-Public Cargo Works Area
Mid-Flood Tide**

Date	Time	Weather Condition	Sampling Depth		Water Temperature			pH		Salinity		DO Saturation		DO					
					°C			-		ppt		%		mg/L					
			m	Value	Average	Value	Average	Value	Average	Value	Average	Value	Average						
30/4/2015	-	Fine	Surface	-	-	-	-	-	-	-	-	-	-	-	-	-	-	-	
	16:30		Middle	1.5	25.40	25.40	25.4	8.24	8.24	8.2	29.97	29.97	30.0	86.6	87.3	87.0	6.05	6.12	6.09
	-		Bottom	-	-	-	-	-	-	-	-	-	-	-	-	-	-	-	-
2/5/2015	-	Sunny	Surface	-	-	-	-	-	-	-	-	-	-	-	-	-	-	-	-
	16:13		Middle	1.5	25.30	25.20	25.3	8.17	8.17	8.2	31.08	31.08	31.1	80.7	78.0	79.4	5.56	5.38	5.47
	-		Bottom	-	-	-	-	-	-	-	-	-	-	-	-	-	-	-	-
4/5/2015	-	Cloudy	Surface	-	-	-	-	-	-	-	-	-	-	-	-	-	-	-	-
	19:36		Middle	1.5	26.50	26.50	26.5	8.12	8.12	8.1	16.06	16.06	16.1	47.0	48.2	47.6	3.48	3.57	3.53
	-		Bottom	-	-	-	-	-	-	-	-	-	-	-	-	-	-	-	-
6/5/2015	-	Cloudy	Surface	-	-	-	-	-	-	-	-	-	-	-	-	-	-	-	-
	19:01		Middle	1.0	26.50	26.50	26.5	8.09	8.06	8.1	22.47	22.47	22.5	48.6	50.1	49.4	3.43	3.54	3.49
	-		Bottom	-	-	-	-	-	-	-	-	-	-	-	-	-	-	-	-
8/5/2015	-	Cloudy	Surface	-	-	-	-	-	-	-	-	-	-	-	-	-	-	-	-
	22:00		Middle	1.0	26.90	26.90	26.9	8.00	8.00	8.0	22.90	22.90	22.9	48.0	49.0	48.5	3.34	3.38	3.36
	-		Bottom	-	-	-	-	-	-	-	-	-	-	-	-	-	-	-	-
11/5/2015	-	Fine	Surface	-	-	-	-	-	-	-	-	-	-	-	-	-	-	-	-
	10:25		Middle	1.5	25.90	25.90	25.9	8.16	8.16	8.2	27.21	27.21	27.2	48.4	47.6	48.0	3.35	3.31	3.33
	-		Bottom	-	-	-	-	-	-	-	-	-	-	-	-	-	-	-	-
13/5/2015	-	Fine	Surface	-	-	-	-	-	-	-	-	-	-	-	-	-	-	-	-
	15:41		Middle	1.5	25.60	25.60	25.6	8.17	8.17	8.2	29.37	29.37	29.4	56.2	54.4	55.3	3.88	3.76	3.82
	-		Bottom	-	-	-	-	-	-	-	-	-	-	-	-	-	-	-	-
15/5/2015	-	Fine	Surface	-	-	-	-	-	-	-	-	-	-	-	-	-	-	-	-
	16:30		Middle	1.5	26.40	26.40	26.4	8.09	8.09	8.1	28.94	28.94	28.9	55.6	55.6	55.6	3.80	3.81	3.81
	-		Bottom	-	-	-	-	-	-	-	-	-	-	-	-	-	-	-	-
18/5/2015	-	Cloudy	Surface	-	-	-	-	-	-	-	-	-	-	-	-	-	-	-	-
	17:23		Middle	1.0	26.60	26.60	26.6	7.95	7.95	8.0	24.09	24.09	24.1	47.2	48.2	47.7	3.30	3.37	3.34
	-		Bottom	-	-	-	-	-	-	-	-	-	-	-	-	-	-	-	-
20/5/2015	-	Amber Rainstorm	Surface	-	-	-	-	-	-	-	-	-	-	-	-	-	-	-	-
	-		Middle	-	-	-	-	-	-	-	-	-	-	-	-	-	-	-	-
	-		Bottom	-	-	-	-	-	-	-	-	-	-	-	-	-	-	-	-
22/5/2015	-	Cloudy	Surface	-	-	-	-	-	-	-	-	-	-	-	-	-	-	-	-
	21:25		Middle	1.0	24.00	24.00	24.0	8.02	8.02	8.0	18.16	18.26	18.2	47.2	47.5	47.4	3.49	3.50	3.50
	-		Bottom	-	-	-	-	-	-	-	-	-	-	-	-	-	-	-	-
26/5/2015	-	Cloudy	Surface	-	-	-	-	-	-	-	-	-	-	-	-	-	-	-	-
	1:25		Middle	1.0	27.10	27.10	27.1	7.96	7.96	8.0	16.38	16.38	16.4	57.2	56.3	56.8	4.15	4.09	4.12
	-		Bottom	-	-	-	-	-	-	-	-	-	-	-	-	-	-	-	-

Remarks:
Single underline denotes exceedance over Action Level.
Double underline denotes exceedance over Limit Level.



**Water Monitoring Result at Ex-WPCWA SE - South-eastern corners of ex-Public Cargo Works Area
Mid-Flood Tide**

Date	Time	Weather Condition	Sampling Depth		Water Temperature		pH		Salinity		DO Saturation		DO				
			m		°C		-		ppt		%		mg/L				
					Value	Average	Value	Average	Value	Average	Value	Average	Value	Average			
30/4/2015	-	Fine	Surface	-	-	-	-	-	-	-	-	-	-	-	-	-	-
	-		Middle	-	-	-	-	-	-	-	-	-	-	-	-	-	-
	-		Bottom	-	-	-	-	-	-	-	-	-	-	-	-	-	-
2/5/2015	-	Sunny	Surface	-	-	-	-	-	-	-	-	-	-	-	-	-	-
	-		Middle	-	-	-	-	-	-	-	-	-	-	-	-	-	
	-		Bottom	-	-	-	-	-	-	-	-	-	-	-	-	-	
4/5/2015	-	Cloudy	Surface	-	-	-	-	-	-	-	-	-	-	-	-	-	-
	-		Middle	-	-	-	-	-	-	-	-	-	-	-	-	-	
	-		Bottom	-	-	-	-	-	-	-	-	-	-	-	-	-	
6/5/2015	-	Cloudy	Surface	-	-	-	-	-	-	-	-	-	-	-	-	-	-
	-		Middle	-	-	-	-	-	-	-	-	-	-	-	-	-	
	-		Bottom	-	-	-	-	-	-	-	-	-	-	-	-	-	
8/5/2015	-	Cloudy	Surface	-	-	-	-	-	-	-	-	-	-	-	-	-	-
	-		Middle	-	-	-	-	-	-	-	-	-	-	-	-	-	
	-		Bottom	-	-	-	-	-	-	-	-	-	-	-	-	-	
11/5/2015	-	Fine	Surface	-	-	-	-	-	-	-	-	-	-	-	-	-	-
	-		Middle	-	-	-	-	-	-	-	-	-	-	-	-	-	
	-		Bottom	-	-	-	-	-	-	-	-	-	-	-	-	-	
13/5/2015	-	Fine	Surface	-	-	-	-	-	-	-	-	-	-	-	-	-	-
	-		Middle	-	-	-	-	-	-	-	-	-	-	-	-	-	
	-		Bottom	-	-	-	-	-	-	-	-	-	-	-	-	-	
15/5/2015	-	Fine	Surface	-	-	-	-	-	-	-	-	-	-	-	-	-	-
	-		Middle	-	-	-	-	-	-	-	-	-	-	-	-	-	
	-		Bottom	-	-	-	-	-	-	-	-	-	-	-	-	-	
18/5/2015	-	Cloudy	Surface	-	-	-	-	-	-	-	-	-	-	-	-	-	-
	-		Middle	-	-	-	-	-	-	-	-	-	-	-	-	-	
	-		Bottom	-	-	-	-	-	-	-	-	-	-	-	-	-	
20/5/2015	-	Amber Rainstorm	Surface	-	-	-	-	-	-	-	-	-	-	-	-	-	-
	-		Middle	-	-	-	-	-	-	-	-	-	-	-	-	-	
	-		Bottom	-	-	-	-	-	-	-	-	-	-	-	-	-	
22/5/2015	-	Cloudy	Surface	-	-	-	-	-	-	-	-	-	-	-	-	-	-
	-		Middle	-	-	-	-	-	-	-	-	-	-	-	-	-	
	-		Bottom	-	-	-	-	-	-	-	-	-	-	-	-	-	
26/5/2015	-	Cloudy	Surface	-	-	-	-	-	-	-	-	-	-	-	-	-	-
	-		Middle	-	-	-	-	-	-	-	-	-	-	-	-	-	
	-		Bottom	-	-	-	-	-	-	-	-	-	-	-	-	-	

Remarks:
 Single underline denotes exceedance over Action Level.
 Double underline denotes exceedance over Limit Level.



**Water Monitoring Result at C6 - Excelsior Hotel
Mid-Ebb Tide**

Date	Time	Weater Condition	Sampling Depth		Water Temperature			pH			Salinity			DO Saturation			DO		
			m	°C			-		ppt		%		mg/L						
				Value	Average		Value	Average	Value	Average	Value	Average	Value	Average					
30/4/2015	-	Fine	Surface	-	-	-	-	-	-	-	-	-	-	-	-	-	-	-	-
	8:55		Middle	2	25.20	25.20	25.2	8.12	8.12	8.1	31.78	31.78	31.8	82.3	81.0	81.7	5.66	5.57	5.62
	-		Bottom	-	-	-	-	-	-	-	-	-	-	-	-	-	-	-	-
2/5/2015	-	Fine	Surface	-	-	-	-	-	-	-	-	-	-	-	-	-	-	-	-
	11:50		Middle	2	26.20	26.20	26.2	8.15	8.15	8.2	30.60	30.60	30.6	72.6	72.6	72.6	5.00	5.00	5.00
	-		Bottom	-	-	-	-	-	-	-	-	-	-	-	-	-	-	-	-
4/5/2015	-	Fine	Surface	-	-	-	-	-	-	-	-	-	-	-	-	-	-	-	-
	10:10		Middle	2	25.90	25.90	25.9	8.38	8.38	8.4	28.99	28.99	29.0	68.8	65.1	67.0	4.72	4.54	4.63
	-		Bottom	-	-	-	-	-	-	-	-	-	-	-	-	-	-	-	-
6/5/2015	0:00	Sunny	Surface	-	-	-	-	-	-	-	-	-	-	-	-	-	-	-	-
	13:29		Middle	2	26.20	26.20	26.2	8.14	8.14	8.1	30.13	30.13	30.1	54.8	54.9	54.9	3.73	3.74	3.74
	0:00		Bottom	-	-	-	-	-	-	-	-	-	-	-	-	-	-	-	-
8/5/2015	-	Cloudy	Surface	-	-	-	-	-	-	-	-	-	-	-	-	-	-	-	-
	15:51		Middle	2	26.60	26.60	26.6	7.96	7.96	8.0	24.98	24.98	25.0	39.4	37.8	38.6	2.74	2.64	2.69
	-		Bottom	-	-	-	-	-	-	-	-	-	-	-	-	-	-	-	-
11/5/2015	-	Amber Rainstorm	Surface	-	-	-	-	-	-	-	-	-	-	-	-	-	-	-	-
	-		Middle	-	-	-	-	-	-	-	-	-	-	-	-	-	-	-	-
	-		Bottom	-	-	-	-	-	-	-	-	-	-	-	-	-	-	-	-
13/5/2015	-	Cloudy	Surface	-	-	-	-	-	-	-	-	-	-	-	-	-	-	-	-
	18:22		Middle	2	25.80	25.80	25.8	8.12	8.12	8.1	29.99	29.99	30.0	84.2	85.0	84.6	5.79	5.84	5.82
	-		Bottom	-	-	-	-	-	-	-	-	-	-	-	-	-	-	-	-
15/5/2015	-	Fine	Surface	-	-	-	-	-	-	-	-	-	-	-	-	-	-	-	-
	10:05		Middle	2	26.70	26.70	26.7	8.16	8.16	8.2	30.19	30.19	30.2	60.5	61.3	60.9	4.09	4.14	4.12
	-		Bottom	-	-	-	-	-	-	-	-	-	-	-	-	-	-	-	-
18/5/2015	-	Cloudy	Surface	-	-	-	-	-	-	-	-	-	-	-	-	-	-	-	-
	11:25		Middle	2	26.20	26.20	26.2	8.09	8.09	8.1	28.79	28.79	28.8	44.3	43.5	43.9	3.03	2.99	3.01
	-		Bottom	-	-	-	-	-	-	-	-	-	-	-	-	-	-	-	-
20/5/2015	-	Cloudy	Surface	-	-	-	-	-	-	-	-	-	-	-	-	-	-	-	-
	14:05		Middle	2	26.40	26.40	26.4	8.01	8.01	8.0	26.80	26.80	26.8	47.9	48.2	48.1	3.32	3.33	3.33
	-		Bottom	-	-	-	-	-	-	-	-	-	-	-	-	-	-	-	-
22/5/2015	-	Cloudy	Surface	-	-	-	-	-	-	-	-	-	-	-	-	-	-	-	-
	15:44		Middle	2	24.30	24.30	24.3	8.16	8.16	8.2	30.90	30.90	30.9	49.8	48.6	49.2	3.49	3.41	3.45
	-		Bottom	-	-	-	-	-	-	-	-	-	-	-	-	-	-	-	-
26/5/2015	-	Cloudy	Surface	-	-	-	-	-	-	-	-	-	-	-	-	-	-	-	-
	15:25		Middle	2	26.00	26.00	26.0	8.01	8.01	8.0	22.94	22.94	22.9	53.2	53.1	53.2	3.78	3.78	3.78
	-		Bottom	-	-	-	-	-	-	-	-	-	-	-	-	-	-	-	-

Remarks:
Single underline denotes exceedance over Action Level.
Double underline denotes exceedance over Limit Level.



**Water Monitoring Result at Ex-WPCWA SW - South-western corners of ex-Public Cargo Works Area
Mid-Ebb Tide**

Date	Time	Weather Condition	Sampling Depth		Water Temperature			pH			Salinity		DO Saturation		DO				
			m	°C			-		ppt		%		mg/L						
				Value	Average		Value	Average	Value	Average	Value	Average	Value	Average					
30/4/2015	-	Fine	Surface	-	-	-	-	-	-	-	-	-	-	-	-	-	-	-	
	8:48		Middle	1.5	24.70	24.70	24.7	8.10	8.10	8.1	30.90	30.90	30.9	81.0	80.7	80.9	5.61	5.59	5.60
	-		Bottom	-	-	-	-	-	-	-	-	-	-	-	-	-	-	-	-
2/5/2015	-	Fine	Surface	-	-	-	-	-	-	-	-	-	-	-	-	-	-	-	-
	11:43		Middle	1.5	24.90	24.90	24.9	8.17	8.17	8.2	30.40	30.04	30.2	51.3	51.7	51.5	3.57	3.61	3.59
	-		Bottom	-	-	-	-	-	-	-	-	-	-	-	-	-	-	-	-
4/5/2015	-	Fine	Surface	-	-	-	-	-	-	-	-	-	-	-	-	-	-	-	-
	9:50		Middle	1.5	25.50	25.50	25.5	8.41	8.41	8.4	30.73	30.73	30.7	65.4	65.0	65.2	4.51	4.48	4.50
	-		Bottom	-	-	-	-	-	-	-	-	-	-	-	-	-	-	-	-
6/5/2015	0:00	Sunny	Surface	-	-	-	-	-	-	-	-	-	-	-	-	-	-	-	-
	10:45		Middle	1.5	26.00	26.00	26.0	8.00	8.00	8.0	30.54	30.54	30.5	53.2	52.8	53.0	3.62	3.59	3.61
	0:00		Bottom	-	-	-	-	-	-	-	-	-	-	-	-	-	-	-	-
8/5/2015	-	Cloudy	Surface	-	-	-	-	-	-	-	-	-	-	-	-	-	-	-	-
	15:32		Middle	1.5	26.00	26.00	26.0	8.15	8.15	8.2	29.23	29.23	29.2	47.3	47.4	47.4	3.26	3.26	3.26
	-		Bottom	-	-	-	-	-	-	-	-	-	-	-	-	-	-	-	-
11/5/2015	-	Amber Rainstorm	Surface	-	-	-	-	-	-	-	-	-	-	-	-	-	-	-	-
	-		Middle	-	-	-	-	-	-	-	-	-	-	-	-	-	-	-	-
	-		Bottom	-	-	-	-	-	-	-	-	-	-	-	-	-	-	-	-
13/5/2015	-	Cloudy	Surface	-	-	-	-	-	-	-	-	-	-	-	-	-	-	-	-
	18:58		Middle	1.5	25.50	25.50	25.5	8.15	8.15	8.2	23.75	23.73	23.7	65.4	65.2	65.3	4.69	4.66	4.68
	-		Bottom	-	-	-	-	-	-	-	-	-	-	-	-	-	-	-	-
15/5/2015	-	Fine	Surface	-	-	-	-	-	-	-	-	-	-	-	-	-	-	-	-
	9:50		Middle	1.5	26.30	26.30	26.3	8.10	8.10	8.1	30.21	30.21	30.2	75.8	76.4	76.1	6.05	6.13	6.09
	-		Bottom	-	-	-	-	-	-	-	-	-	-	-	-	-	-	-	-
18/5/2015	-	Cloudy	Surface	-	-	-	-	-	-	-	-	-	-	-	-	-	-	-	-
	11:14		Middle	1.5	26.10	26.10	26.1	8.11	8.11	8.1	29.65	29.65	29.7	46.6	46.8	46.7	3.19	4.20	3.70
	-		Bottom	-	-	-	-	-	-	-	-	-	-	-	-	-	-	-	-
20/5/2015	-	Cloudy	Surface	-	-	-	-	-	-	-	-	-	-	-	-	-	-	-	-
	13:45		Middle	1.5	26.00	26.00	26.0	8.06	8.06	8.1	23.78	23.78	23.8	31.1	31.3	31.2	2.20	2.21	<u>2.21</u>
	-		Bottom	-	-	-	-	-	-	-	-	-	-	-	-	-	-	-	-
22/5/2015	-	Cloudy	Surface	-	-	-	-	-	-	-	-	-	-	-	-	-	-	-	-
	15:32		Middle	1.5	24.20	24.20	24.2	8.16	8.16	8.2	30.37	30.37	30.4	40.0	39.0	39.5	2.82	2.15	<u>2.49</u>
	-		Bottom	-	-	-	-	-	-	-	-	-	-	-	-	-	-	-	-
26/5/2015	-	Cloudy	Surface	-	-	-	-	-	-	-	-	-	-	-	-	-	-	-	-
	19:00		Middle	1.5	26.10	26.10	26.1	8.20	8.20	8.2	25.23	25.23	25.2	62.6	63.1	62.9	4.40	4.44	4.42
	-		Bottom	-	-	-	-	-	-	-	-	-	-	-	-	-	-	-	-

Remarks:
Single underline denotes exceedance over Action Level.
Double underline denotes exceedance over Limit Level.



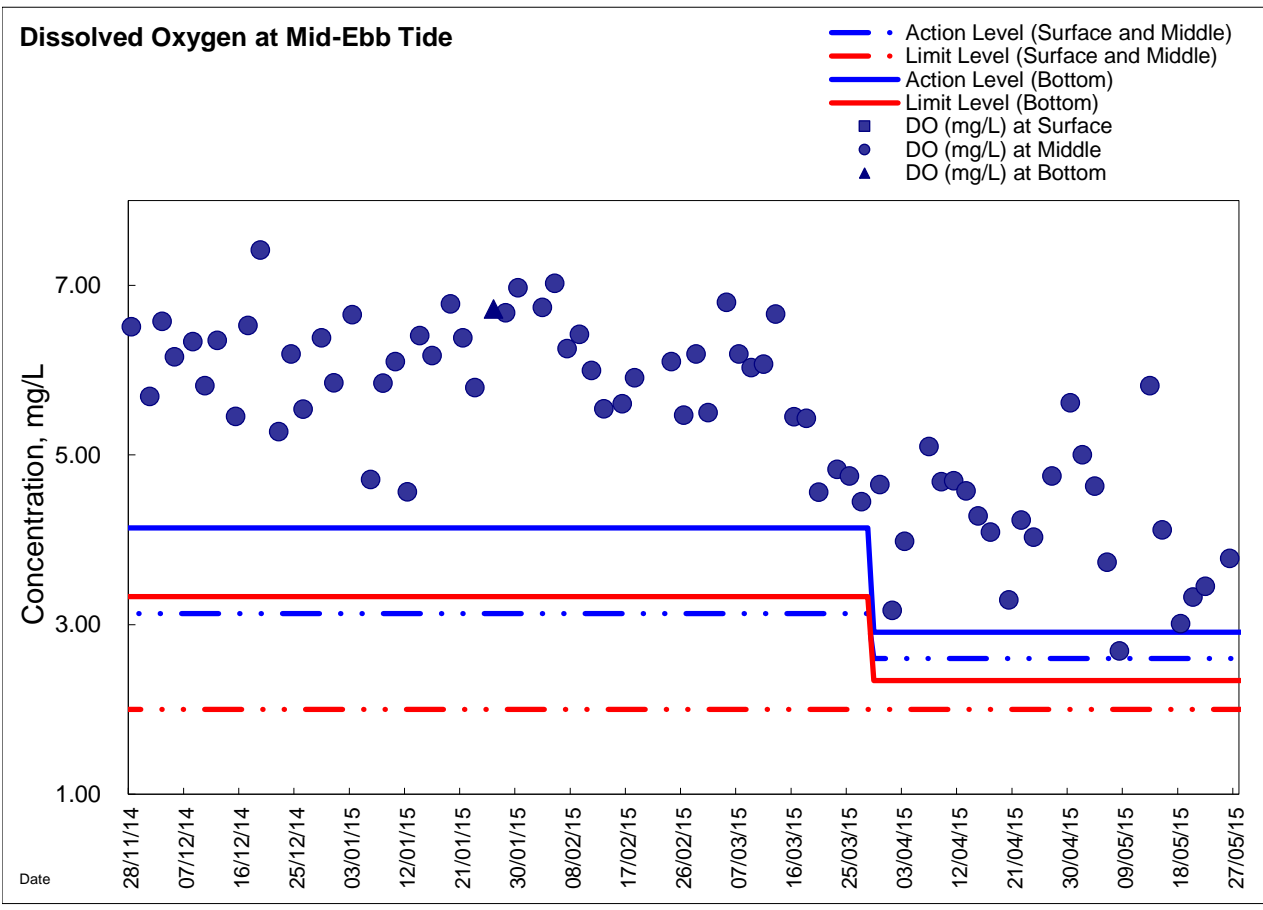
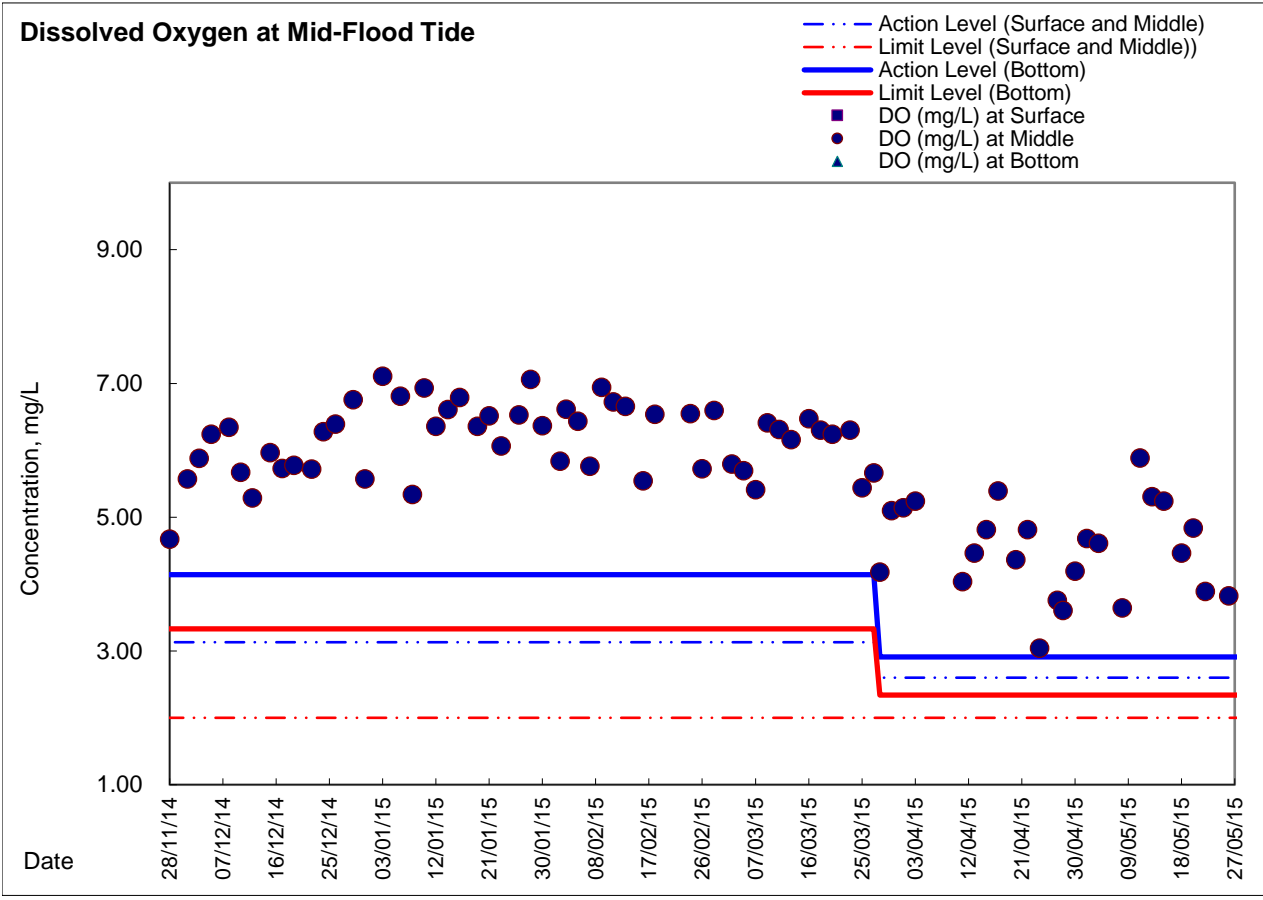
**Water Monitoring Result at Ex-WPCWA SE - South-eastern corners of ex-Public Cargo Works Area
Mid-Ebb Tide**

Date	Time	Weater Condition	Sampling Depth		Water Temperature			pH			Salinity		DO Saturation		DO		
			m		°C		-		ppt		%		mg/L				
					Value	Average	Value	Average	Value	Average	Value	Average	Value	Average			
30/4/2015	-	Fine	Surface	-	-	-	-	-	-	-	-	-	-	-	-	-	-
	-		Middle	-	-	-	-	-	-	-	-	-	-	-	-	-	-
	-		Bottom	-	-	-	-	-	-	-	-	-	-	-	-	-	-
2/5/2015	-	Fine	Surface	-	-	-	-	-	-	-	-	-	-	-	-	-	-
	-		Middle	-	-	-	-	-	-	-	-	-	-	-	-	-	
	-		Bottom	-	-	-	-	-	-	-	-	-	-	-	-	-	
4/5/2015	-	Fine	Surface	-	-	-	-	-	-	-	-	-	-	-	-	-	-
	-		Middle	-	-	-	-	-	-	-	-	-	-	-	-	-	
	-		Bottom	-	-	-	-	-	-	-	-	-	-	-	-	-	
6/5/2015	-	Sunny	Surface	-	-	-	-	-	-	-	-	-	-	-	-	-	-
	-		Middle	-	-	-	-	-	-	-	-	-	-	-	-	-	
	-		Bottom	-	-	-	-	-	-	-	-	-	-	-	-	-	
8/5/2015	-	Cloudy	Surface	-	-	-	-	-	-	-	-	-	-	-	-	-	-
	-		Middle	-	-	-	-	-	-	-	-	-	-	-	-	-	
	-		Bottom	-	-	-	-	-	-	-	-	-	-	-	-	-	
11/5/2015	-	Amber Rainstorm	Surface	-	-	-	-	-	-	-	-	-	-	-	-	-	-
	-		Middle	-	-	-	-	-	-	-	-	-	-	-	-	-	
	-		Bottom	-	-	-	-	-	-	-	-	-	-	-	-	-	
13/5/2015	-	Cloudy	Surface	-	-	-	-	-	-	-	-	-	-	-	-	-	-
	-		Middle	-	-	-	-	-	-	-	-	-	-	-	-	-	
	-		Bottom	-	-	-	-	-	-	-	-	-	-	-	-	-	
15/5/2015	-	Fine	Surface	-	-	-	-	-	-	-	-	-	-	-	-	-	-
	-		Middle	-	-	-	-	-	-	-	-	-	-	-	-	-	
	-		Bottom	-	-	-	-	-	-	-	-	-	-	-	-	-	
18/5/2015	-	Cloudy	Surface	-	-	-	-	-	-	-	-	-	-	-	-	-	-
	-		Middle	-	-	-	-	-	-	-	-	-	-	-	-	-	
	-		Bottom	-	-	-	-	-	-	-	-	-	-	-	-	-	
20/5/2015	-	Cloudy	Surface	-	-	-	-	-	-	-	-	-	-	-	-	-	-
	-		Middle	-	-	-	-	-	-	-	-	-	-	-	-	-	
	-		Bottom	-	-	-	-	-	-	-	-	-	-	-	-	-	
22/5/2015	-	Cloudy	Surface	-	-	-	-	-	-	-	-	-	-	-	-	-	-
	-		Middle	-	-	-	-	-	-	-	-	-	-	-	-	-	
	-		Bottom	-	-	-	-	-	-	-	-	-	-	-	-	-	
26/5/2015	-	Cloudy	Surface	-	-	-	-	-	-	-	-	-	-	-	-	-	-
	-		Middle	-	-	-	-	-	-	-	-	-	-	-	-	-	
	-		Bottom	-	-	-	-	-	-	-	-	-	-	-	-	-	

Remarks:
Single underline denotes exceedance over Action Level.
Double underline denotes exceedance over Limit Level.

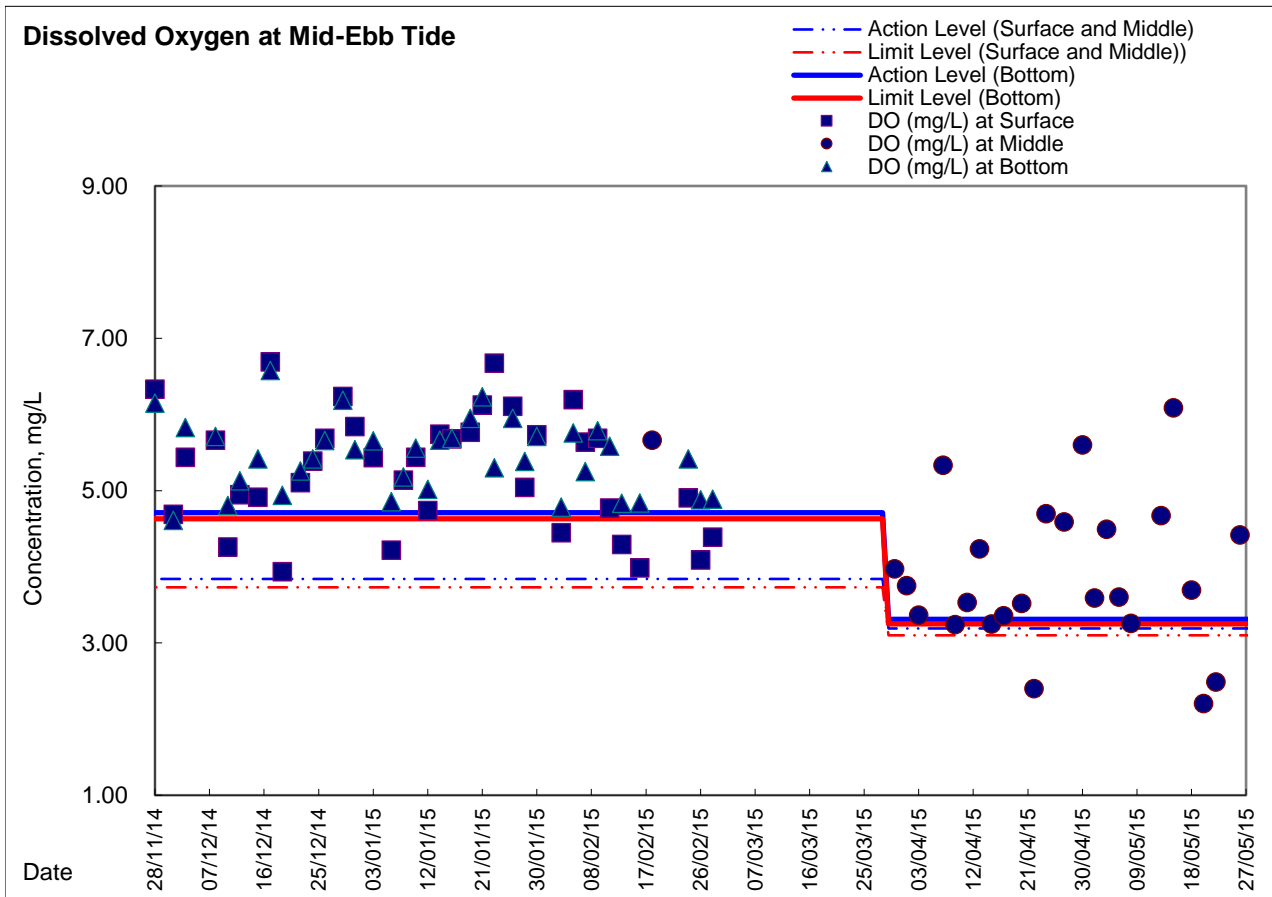
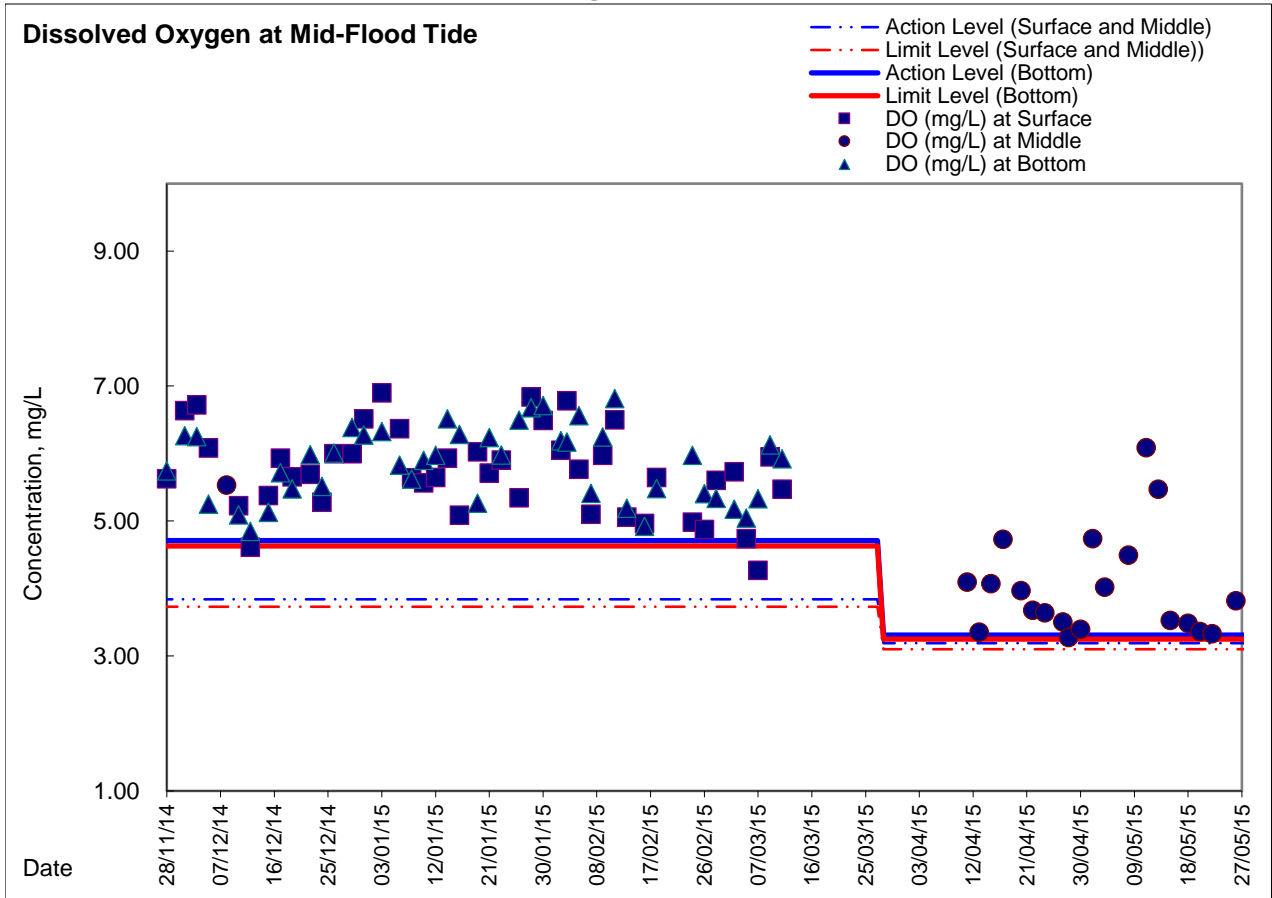


Graphic Presentation of Enhanced Water Monitoring Results (DO) at C6 - Excelsior Hotel





Graphic Presentation of Enhanced Water Monitoring Results (DO) at Ex-WPCWA SW - South-western corners of ex-Public Cargo Works Area





Graphic Presentation of Enhanced Water Monitoring Results (DO) at Ex-WPCWA SE - South-eastern corners of ex-Public Cargo Works Area

